

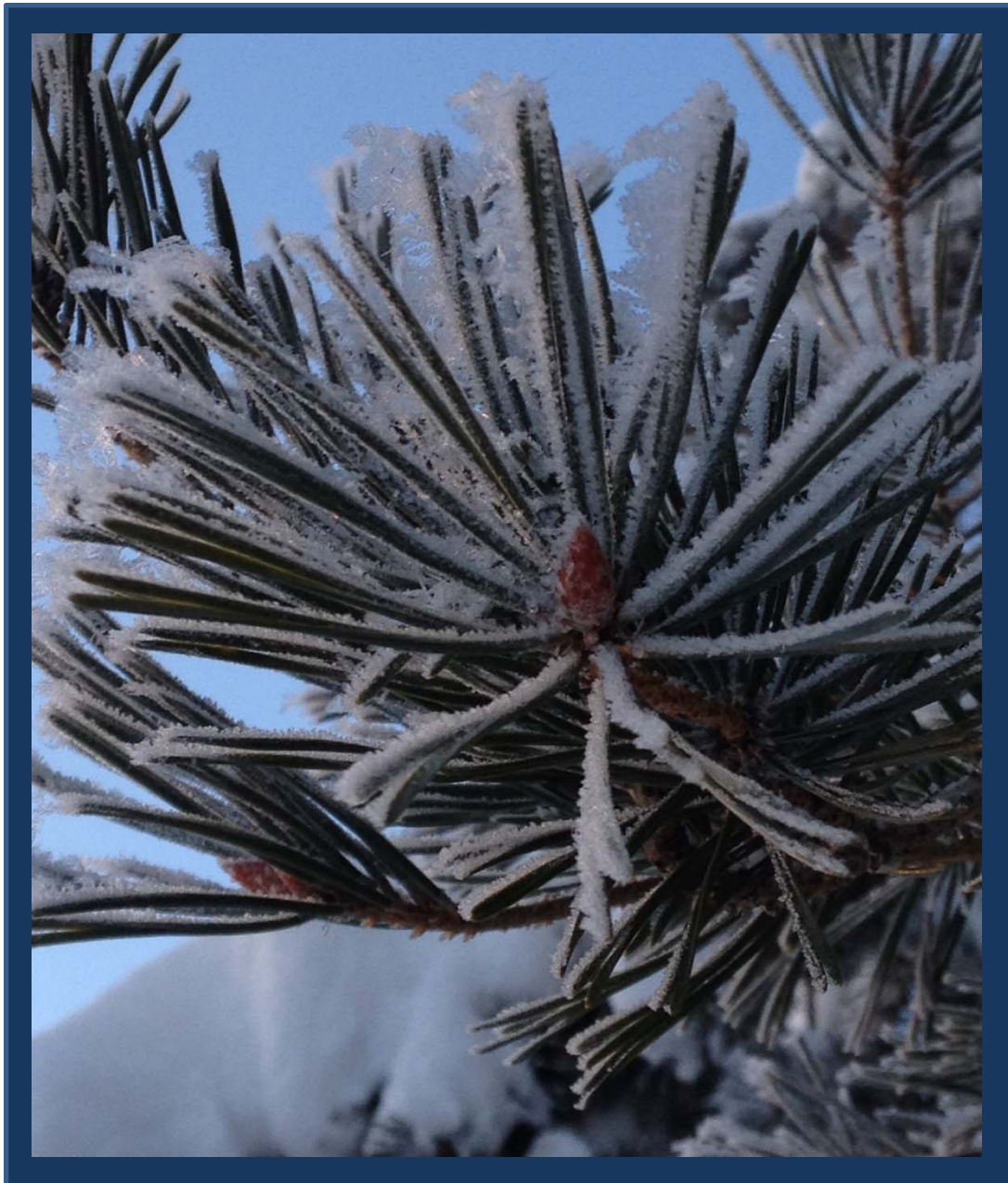


**Fairbanks
North
Star
Borough**

**Community Research Center
PO Box 71267
Fairbanks, Alaska 99707-1267
(907) 459-1000**

COMMUNITY RESEARCH QUARTERLY

A Socio - Economic Review



Winter 2014

Volume XXXVII, No. 4

COMMUNITY RESEARCH CENTER

The Community Research Center is located on the second floor
of the Borough Administration Building
at 809 Pioneer Road.

Office and Research Library hours are Monday through Friday
8:00 a.m. to Noon and 1:00 p.m. to 5:00 p.m.



CITATION

Tabular and summary information contained herein may be reproduced without special permission. It is requested that any information reproduced be cited as follows: Fairbanks North Star Borough, Community Research Center, *Community Research Quarterly*, Vol. XXXVII, No. 4, 2014.

ACKNOWLEDGMENTS

The Community Research Center would like to thank the many persons, businesses, government agencies and organizations who contributed to this report. FNSB has established a policy of equal opportunity in employment, service, programs and activities.

COVER PAGE

Evergreen photos taken by Nancy Durham, Planner III of the Fairbanks North Star Borough, Department of Community Planning.

FAIRBANKS NORTH STAR BOROUGH
COMMUNITY RESEARCH QUARTERLY
A Review of Socio - Economic Trends

Volume XXXVII, Number 4
Winter 2014

BOROUGH MAYOR
Luke Hopkins

COMMUNITY PLANNING DEPARTMENT
D. Christine Nelson, Director
Kellen Spillman, Deputy Director

COMMUNITY RESEARCH CENTER
Jennifer Nachtrieb, Documentation Coordinator II

Fairbanks North Star Borough, Community Research Center
PO Box 71267, Fairbanks, Alaska 99707-1267
Phone: (907) 459-1212; e-mail: Planning@fnsb.us
WEBSITE: <http://co.fairbanks.ak.us/CommunityPlanning/CRC>

Table of Contents


	<u>Page</u>
A Spotlight on Community Economic Trends	i-iv
	
Fairbanks Economy at a Glance	1-2
Economic Indicators	3-15
Bank Deposit & Loan Summary	3
Bankruptcies Filed	4
Notices of Default	5
Foreclosures	6
Fairbanks International Airport Freight	7
Fairbanks International Airport Transit Freight	8
Fairbanks International Airport Revenue Landings	9
Fairbanks International Airport Passengers	10
Alaska Highway Statewide Entering Passengers	11
Alaska Highway Statewide Exiting Passengers	11
Alaska Highway Statewide Net Annual Migration Trends	12
Alaska Highway Statewide Net Monthly Migration	12
Hotel / Motel Room Receipts	13
Quarterly Hotel / Motel Room Receipts	13
Annual Hotel / Motel Room Receipts	14
University of Alaska Museum Visitors	15
Employment	16-21
Civilian Labor Force Unemployment Rates	16-17
Average Monthly Employment Estimates by Sector	17
Average Monthly Employment Estimates by Industry	18
Annual Average Monthly Employment by Industry	19
Annual Average Monthly Wage by Industry	20
Quarterly Census of Employment and Wages by Industry	21
Housing	22-27
Apartment/Multi-Plex Vacancy Rates	22
Rental Housing Units Available	23
Average Monthly Rents for Available Housing Units	24
Residential Housing Sales	25
Annual Average Residential Housing Sales	26
New Structures Annual Report	27

Table of Contents

	<u>Page</u>
Cost of Living	28-32
C2ER Cost of Living Index	28-29
Consumer Price Index-U for All Items	29
Consumer Price Index-U (Anchorage)	30
Consumer Price Index-U for All Items (U.S. City Average)	30
Cost of Food at Home for a Week	31
Average Self-service Unleaded Gasoline Prices	32
Population & Social Conditions	33-41
Population Counts & Estimates	33
Military Population	34
Vital Statistics	35
Birth, Death, Marriage & Divorce Rates	36
College Degrees Awarded	37
Opening Fall Semester headcounts for Credit Enrollment, University of Alaska	37
Fall Public School Enrollments	38
Private School Enrollments	39
Alaska Statewide Correspondence School Enrollments	39
Alcoholic Beverages Distributed or Sold	40
Annual Alcoholic Beverages Distributed or Sold	41

NOTE FROM THE EDITOR:

If you have a change in your address information and wish to continue to receive the hard copy of the *Community Research Quarterly* please advise this office as soon as possible so the database can be altered before the next mailing. In an effort to conserve on postage costs, if your issue of the *Community Research Quarterly* is returned for any reason, we will not attempt to resend. Thank you for your cooperation.

A SPOTLIGHT
ON
COMMUNITY ECONOMIC TRENDS

SPOTLIGHT SOURCE: *Construction Forecast Positive in Short Term with 3% Dip*, By Elwood Brehmer, Alaska Journal of Commerce, January 29, 2015. Elwood Brehmer can be reached at elwood.brehmer@alaskajournal.com.

Read more at the Alaska Journal of Commerce website: <http://www.alaskajournal.com>.

Construction forecast positive in short term with 3% dip

By Elwood Brehmer, Alaska Journal of Commerce

Published: 2015.01.29 01:51 PM

The state budget may be grim but Alaska's construction industry as a whole should have another good year, according to a University of Alaska Anchorage Institute of Social and Economic Research forecast.

The 2015 construction outlook predicts a total spend of more than \$8.5 billion statewide. That would be a 3 percent decline from the revised 2014 projection of \$8.8 billion worth of construction activity in Alaska.

"Our short-term outlook is positive," Associated General Contractors of Alaska Executive Director John MacKinnon said in a formal statement. "We've seen dips in the price of oil and dips in the economy before, and they both come back up. At this point in the cycle we don't know what the bottom will be or how long before it trends up; it will go back up."

MacKinnon also noted that there is typically a lag between when public money is appropriated and when it actually "hits the street" in the form concrete being poured or buildings going up, so prior year bonds and capital spends will undoubtedly have an impact in 2015.

ISER prepares the forecast for AGC of Alaska every year.

Employment in the industry is expected to dip slightly from the 17,600 jobs last year, which was a 6 percent increase over 2013. Those projections do not include self-employed contractors in Alaska, estimated to number 9,000 in 2011.

"Our annual forecast underscores the importance of the construction industry in Alaska. It's not just about the jobs and the economic value of the current construction projects — the one-time expenditures," MacKinnon said. "It's really about how what we build becomes a part of the ongoing economy of Alaska for years and often, generations."

Private spending is expected to be more than \$5.5 billion of the total and down about 6 percent. Leading the way per usual will be the oil and gas industry with about \$3.8 billion of work, a slight decline from 2014.

ConocoPhillips has several large oil projects on the Western North Slope and ExxonMobil is continuing work on its large Point Thomson gas development.

Forecast authors Scott Goldsmith and Pamela Cravez wrote that low oil prices have a greater impact on how much producers have in the bank than what they want to do because projects are planned based on conservative price models.

“Some of the largest operators in Alaska are quite strong financially, and others have funding sources not tied to the oil price. Furthermore, in Cook Inlet, activity is more sensitive to the price of natural gas than of oil, and the state, through its tax credit programs, has also provided a funding source not directly tied to the price of oil,” they wrote. “Finally, the industry is under political pressure to show that the new state production tax, SB 21, has stimulated new investment.”

At \$210 million, mining work is projected to be up 19 percent despite some lower metal prices. The state’s six major producing mines have larger capital expenditures planned for the year, according to the report.

A subcategory that could go under public and private spending, utilities should spend about \$680 million this year, down 20 percent. That is due mainly to the completion of Matanuska Electric Association’s Eklutna plant. The largest project left is Anchorage’s Municipal Light and Power \$275 million replacement plant scheduled for completion in mid-2016.

Health care spending will be pretty steady, at \$240 million in the coming year, based on federally supported projects by Alaska Native health organizations. The Alaska Native Medical Center in Anchorage is building a 200-room patient housing facility.

Public sector spending should be about flat, at more than \$2.9 billion, according to Goldsmith and Cravez.

Residential construction is pegged to be down 14 percent at \$415 million. The activity continues to center on the Matanuska-Susitna Borough; however, land shortages in Anchorage, high heating costs in Fairbanks and overall stagnant economic and population growth will likely slow the construction segment.

Public sector spending should be about flat, at more than \$2.9 billion.

Work on transportation infrastructure — highways, airports, ports, and railroad — should be up slightly and total more than \$1.2 billion.

Defense spending, which includes U.S. Army Corps of Engineers environmental work along with military construction, should be \$435 million, up about 10 percent. Fort Greely is expected to get \$50 million for its missile defense program, a recent addition to the federal budget, the authors wrote.

Other federal spending, done largely by the Interior Department in Alaska, is expected to be off 15 percent to \$255 million.

Elwood Brehmer can be reached at elwood.brehmer@alaskajournal.com.

THIS PAGE INTENTIONALLY BLANK

ECONOMY AT-A-GLANCE

Fairbanks North Star Borough

Economic Indicator	Current Data Period	One Period Ago	One Year Ago
Reporting Period	4th Qtr '14	% Change from 3rd Qtr. '14	% Change from 4th Qtr. '13
BANKING			
Total Bank Deposits (millions of \$)	\$1,105.7	2.8%	3.0%
Total Bank Loans (millions of \$)	\$668.9	0.9%	0.9%
BANKRUPTCIES			
Business	2	100.0%	0.0%
Non-Business	12	-40.0%	50.0%
TRANSPORTATION			
Fairbanks International Airport			
Incoming Freight (thousands of lbs.)	1,763	-23.8%	16.0%
Outgoing Freight (thousands of lbs.)	6,685	-29.3%	-7.5%
Transit Freight (thousands of lbs.)	154	-53.6%	-83.7%
Revenue Landings	5,193	-29.9%	3.7%
Incoming Passengers	99,229	-39.0%	2.5%
Outgoing Passengers	106,819	-34.8%	2.8%
Alaska Highway (statewide)			
Entering Passengers	7,022	-83.2%	-11.1%
Exiting Passengers	8,461	-82.2%	-3.3%
EMPLOYMENT			
Total Employment	39,100	-3.7%	-0.8%
Mining and Logging	1,600	-11.1%	-11.1%
Construction	2,600	-23.5%	0.0%
Manufacturing	500	-16.7%	0.0%
Trade/Transportation/Utilities.	8,300	-3.5%	1.2%
Information	500	0.0%	-16.7%
Financial Activities	1,300	0.0%	0.0%
Professional & Business Services	2,300	0.0%	-8.0%
Education & Health Services	5,400	0.0%	0.0%
Leisure & Hospitality	3,600	-21.7%	2.9%
Other Services	1,200	0.0%	0.0%
Government	11,700	6.4%	0.0%

NOTE: Employment numbers rounded to nearest 100.

Fairbanks Economy at a Glance

(continued)
Fairbanks North Star Borough

Economic Indicator	Current Data Period	One Period Ago	One Year Ago
Reporting Period (annual/by qtr.)			
CONSTRUCTION	Annual		
New Structures Annual Report (2013)	255	-	-23.4%
Reporting Period (annual/by qtr.)	4th Qtr. '14	3rd Qtr. '14	4th Qtr. '13
REAL ESTATE			
Single Family Houses			
Number Sold	289	-19.0%	70.8%
Average Price	\$223,477	-1.1%	10.2%
RENTALS			
Residential Rentals			
Rental Units Advertised	747	2.1%	5.7%
Average Rent (2 bdrm. apartment)	\$1,197	-0.2%	-3.2%
POPULATION			
FNSB (Census annual)**	100,436	-	0.0%
City of Fairbanks** (annual)	32,324	-	0.0%
City of North Pole** (annual)	2,214	-	0.0%
FNSB (DCCED annual)^	97,972	-	-1.7%
FNSB (ADOL annual)**	97,972	-	-1.7%
City of Fairbanks** (annual)	31,721	-	-1.5%
City of North Pole** (annual)	2,198	-	-0.5%

SOURCE: (1) U.S. Census Bureau, Population Division, July 1st estimates. 2013 Population Estimates. PEPANNRES Table: *Annual Estimates of the Resident Population for Counties of Alaska: April 1, 2010 to July 1, 2013*, also Table: *Annual Estimates of the Resident Population in Alaska: now known as *Intercensal Estimates of the Resident Population for Incorporated Places and Minor Civil Divisions: April 1, 2000 to July 1, 2013*, May 2014. Geographic change notes defined at: <http://www.census.gov>.

(2) Alaska Department of Labor and Workforce Development, Research and Analysis Section; and US Census Bureau. *Alaska Population Estimates by Borough, Census Area, City and Census Designated Place (CDP), 2010-2014*, Vintage 2014, and *Alaska Population Estimates by Borough, Census Area, City and Census Designated Place (CDP), 2010-2014*, Vintage 2014. All numbers are based on 2010 Census geography. ADOL website: <http://laborstats.alaska.gov>, February 2015.

(3) Alaska Department of Commerce, Community and Economic Development (DCCED), Division of Community and Regional Affairs, 2014 Commissioner Certified Estimates, January 15, 2014. DCCED Certified numbers may vary from ADOL population estimates as a result of the Population Estimate Appeal process available to incorporated communities on a yearly basis, as well as annual revisions by ADOL. Once certified, DCCED numbers may be applied for two consecutive calendar years. ^ DCCED website: http://www.commerce.state.ak.us/dca/commdb/CF_COMMDB.htm.

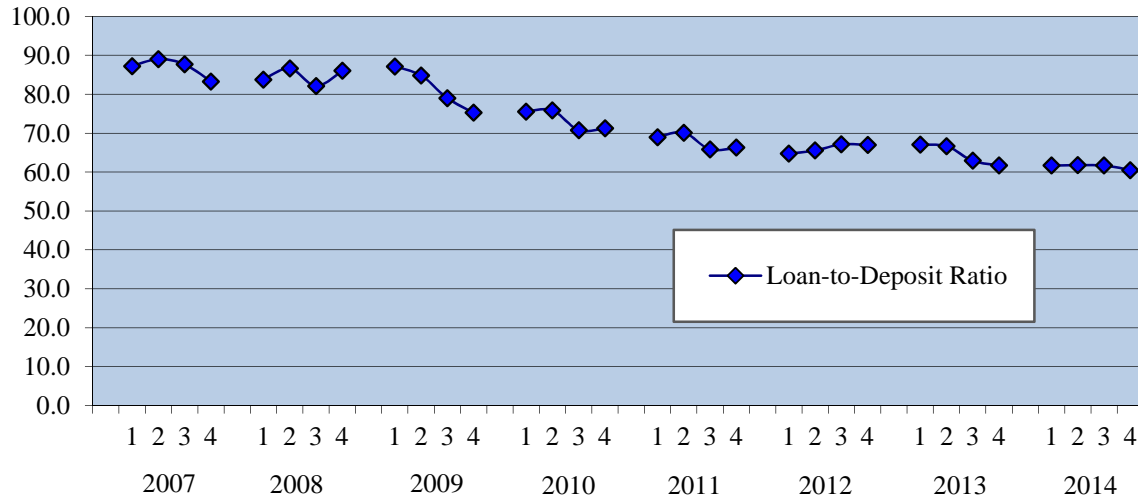
NOTE: The FNSB numbers include population for all communities within the Borough plus Fort Wainwright Army Base and Eielson Air Force Base.

** U.S. Census and ADOL estimated numbers may be revised annually.

ECONOMIC INDICATORS

BANK DEPOSIT & LOAN SUMMARY

Fairbanks North Star Borough
2007-2014, End of Quarter



BANK DEPOSIT & LOAN SUMMARY

Fairbanks North Star Borough
2007-2014

	2007	2008*	2009	2010	2011	2012	2013	2014
Deposits	-----Millions of Dollars-----							
March 31	\$699.9	\$751.1	\$786.9	\$873.8	\$938.3	\$957.0	\$1,007.8	\$1,063.7
June 30*	\$731.2	\$754.6	\$826.9	\$889.4	\$929.3	\$983.6	\$1,023.2	\$1,064.6
Sept. 30	\$752.7	\$807.4	\$847.0	\$927.1	\$966.3	\$1,021.4	\$1,064.8	\$1,075.3
Dec. 31	\$762.1	\$782.3	\$887.0	\$949.2	\$960.3	\$1,014.6	\$1,073.7	\$1,105.7
Loans	-----Millions of Dollars-----							
March 31^	\$610.5	\$629.1	\$685.4	\$660.0	\$646.9	\$619.5	\$675.3	\$655.9
June 30*	\$650.9	\$653.7	\$701.4	\$674.4	\$651.6	\$644.7	\$681.8	\$657.7
Sept. 30	\$659.8	\$662.9	\$669.0	\$656.0	\$636.1	\$685.6	\$669.8	\$663.1
Dec. 31*	\$634.6	\$673.0	\$667.6	\$676.0	\$636.7	\$679.1	\$662.8	\$668.9

SOURCE: Denali State Bank, First National Bank of Alaska, Mt. McKinley Bank, Northrim Bank, Wells Fargo Bank Alaska, N.A. (local branches), personal communications 2007-2014.

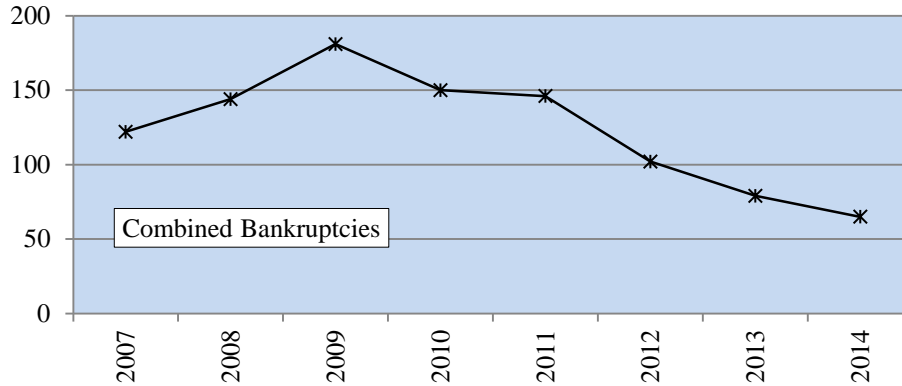
* Adjustment made to data entered March-June 2008 in October 2008.

^ Calculation adjusted loan value only, November 2007.

Economic Indicators

TOTAL BANKRUPTCIES FILED

Alaska Fourth Judicial District, Fairbanks Office
2007-2014



BANKRUPTCIES FILED

Alaska Fourth Judicial District, Fairbanks Office
2007-2014

	2007	2008	2009	2010*	2011*	2012*	2013*^	2014*
Nonbusiness								
1st Quarter	20	20	31	38	40	24	28	14
2nd Quarter	25	22	54	39	37	26	26	14
3rd Quarter	21	41	42	38	35	31	13	20
4th Quarter	32	40	48	33	33	20	8	12
Total	98	123	175	148	145	101	75	60
% Change from Previous Year	9%	26%	42%	-15%	-2%	-30%	-26%	-20%
Business								
1st Quarter	3	6	0	1	0	0	0	2
2nd Quarter	9	6	2	1	1	0	0	0
3rd Quarter	8	7	2	0	0	0	2	1
4th Quarter	4	2	2	0	0	1	2	2
Total	24	21	6	2	1	1	4	5
% Change from Previous Year	41%	-13%	-71%	-67%	-50%	0%	300%	25%
Combined Annual Total	122	144	181	150	146	102	79	65

SOURCE: U.S. Courts website: <http://www.akb.uscourts.gov>, and personal communications with FNSB Treasury & Budget Division, 2007-2015.

NOTE: Revised formulas and chart, November 18, 2013.

Beginning in January 2009 the U.S. Bankruptcy Court changed the way they report bankruptcy cases. Due to staffing changes the information is no longer individually entered. They now use the nationwide formatting which does not sort business and non-business categories. FNSB will research the cases reported in effort to separate the two categories.

* Beginning First Quarter 2010 bankruptcy records reflect refined research documenting through FNSB Treasury & Budget Division who utilizes PACER (Public Access To Court Electronic Records).

^ 3rd Quarter 2013 numbers were changed to remove count of bankruptcy appeal case and correct a miscount in business cases.

Economic Indicators

NOTICES OF DEFAULT

Fairbanks Recording District*
2008-2014 ^

	2008	2009	2010	2011	2012	2013	2014	% Change 2013-14
January	21	20	20	14	8	30	29	-3%
February	17	32	26	33	20	20	18	-10%
March	16	26	15	27	25	13	12	-8%
April	16	21	21	22	14	16	17	6%
May	25	18	25	15	26	18	17	-6%
June	27	18	30	18	24	16	29	81%
July	25	34	22	13	23	25	15	-40%
August	20	26	23	25	22	24	15	-38%
September	27	20	26	21	27	17	18	6%
October	27	16	19	12	21	19	19	0%
November	14	16	11	14	12	19	15	-21%
December	25	24	14	20	12	33	22	-33%
Total	260	271	252	234	234	250	226	-10%

SOURCE: Recorder's Office, Alaska Department of Natural Resources website: <http://www.dnr.alaska.gov>, 2008-2014.

NOTE: Notices of default indicate the terms of a Deed of Trust or Mortgage have been breached, i.e. delinquency of payments. The notices need not result in foreclosures because deficiencies can be corrected. There can be multiple notices if a default is corrected but the Deed of Trust or Mortgage terms are breached again in the future. A single notice can be for more than one parcel. Notices are tabulated by date of initiation.

^ Current data supersedes previous figures reported. The data presented only reflects the number of notice of defaults that have been recorded and does not reflect any effect of amendments, modifications or terminations of notice of defaults. Please contact the Community Research Center for any additional questions.

* **Fairbanks Recording District** includes (*bolded communities may reside in the FNSB*) **A.G.M.(Camp); Alaska Lodge;** Alatna; **Alder Creek; Alder Creek Camp;** Alexanders Village; Allakaket; **Amy Creek;** Arctic City (Aband); **Aurora Lodge;** Barlett; **P.O. (Ester);** Bear Paw; Bearman Cabin; Beaver; Beaver Cr. Yukon; Bend S.C.; Berry; Berry Camp; Bettles; Bettles Field (Evansville); Biedermans Camp; Big Delta; Big Horn; Big Lake; Birch Creek; Black Jack Cabin; Bonanza; Bonanza Bar; Boundary; Burnt Paw; **Cache;** Canyon Creek Camp; Canyon Vil; Caribou; Caribou Bar; Caro; Cathedral Bluffs; Cathedral Rapids; Central; Chalkyitsik; Chandalar; Chapman; **Chatanika; Chena; Chena Hot Springs;** Chicken; Chisana; Christian; Circle; Circle Hot Springs; **Cleary Summit;** Coal Creek; Cold Foot; **College;** Crooked Creek; Dahten; Dall; Dalton; Delta Junction; Demarcation Pt; Diamond; Dome; Dome Creek; Donnelly; Doran; Dot Lake; Eagle; Eagle Creek; Eagle Village; **Eielson Air Force Base; Ester (Bartlett; P.O.);** Evansville (Bettles Field); **Fairbanks; Fairbanks Creek Camp; Fiftysix Mile Cabin;** Fish Camp; Fishhook; Flume Creek; Fort Greely; Fort Hamlin; **Fort Wainwright;** Fort Yukon; Forty-Mile R.H. (Tetlin Junction); Fortysix Mile Cabin; Fossil Cr. S.C.; **Fox;** Franklin; Glacier; Glacier (Mine); Gold Bench; **Goldstream; Graehl;** Healy Lake; Heinie Creek; Henshaw Cabin; Horsfeld ; Jack Wade; Joe Ward Camp; John Herbert Village; Johnnie Frog Cabin; Johnson River; Joseph; Kantishna; Kochumstuk; **Lake Harding Store;** Lake Minchumina; Larson Cabin; Liberty; Lilywig Creek; Livengood; Log Cabin Inn; Mansfield Village; **Martin;** McCallum; Miller House; Millers Camp (Aband); Millers R.H.; Montana Creek Camp; **Moose Creek;** Mudbank Cabin; **Murphy Dome;** Muskeg; Myrtle Creek; Nabesna; Nabesna Village; Nation (Aband); Ninemile Cabin; Nineteen Mile; Nolan; **North Pole;** North Slope; Northway; Northway Junction; Old Camp; Old Rampart; **Old Saulich; Olnes;** Oscars Cabin; Poker Creek; Yukon Post & Scoby; Richardson; **Riverside; Roosevelt; Salcha; Salchakat;** Salmon; Salmon River; Sam Creek; **Saulich;** Scottie Creek; Seventeen mile; Shaw Creek Lodge; Shuman House; **Silver Fox R.H.;** Sixtymile (Glacier P.O.) Yukon; Sourdough Camp; **South Fork;** Standard; **Steele Creek;** Stephens (Stevens); Swede Boys Camp; Tanacross; Ten Mile; Tenderfoot; Tetlin; Tetlin Jet; Thirtysix Mile; Cabin Tok (Junction); Toklat; Tolovana; Tramway Bar; Tsukon Cabin; Twentyfour Mile Cabin; Twentytwo Mile Village; **Two Rivers;** United States Camp; Venetie; Venetie Landing; Wallen; **West Fork (Aband);** White Eye; Wild Lake; Willow House; Wiseman; Woodchopper (Aband); Woodchopper Creek.

Economic Indicators

FORECLOSURES

Fairbanks Recording District*
2008-2014 ^

	2008	2009	2010	2011	2012	2013	2014	% Change 2013-14
January	5	12	15	11	14	19	21	11%
February	9	20	12	10	11	9	6	-33%
March	6	16	13	10	18	7	24	243%
April	7	14	14	14	9	22	13	-41%
May	10	12	13	7	18	14	13	-7%
June	10	13	10	15	10	6	19	217%
July	5	20	13	12	17	22	20	-9%
August	8	10	16	12	12	25	16	-36%
September	11	14	21	11	8	13	18	38%
October	14	20	13	9	9	27	15	-44%
November	4	15	10	19	18	16	16	0%
December	13	15	15	14	18	13	15	15%
Total	102	181	165	144	162	193	196	2%

SOURCE: Recorder's Office, Alaska Department of Natural Resources website: <http://www.dnr.alaska.gov>, 2008-2014.

NOTE: Foreclosures in this table indicate the loss of property by a borrower as a result of an Affidavit of Foreclosure, Deed in Lieu of Foreclosure, Relinquishment, Trustee Deed, or Judicial Deed of Foreclosure. More than a single parcel may be affected by the foreclosure.

^ Current data supersedes previous figures reported.

* Fairbanks Recording District includes (*bolded communities may reside in the FNSB*) **A.G.M.(Camp); Alaska Lodge;** Alatna; **Alder Creek; Alder Creek Camp;** Alexanders Village; Allakaket; **Amy Creek;** Arctic City (Aband); **Aurora Lodge;** Barlett; **P.O. (Ester);** Bear Paw; Bearman Cabin; Beaver; Beaver Cr. Yukon; Bend S.C.; Berry; Berry Camp; Bettles; Bettles Field (Evansville); Biedermans Camp; Big Delta; Big Horn; Big Lake; Birch Creek; Black Jack Cabin; Bonanza; Bonanza Bar; Boundary; Burnt Paw; **Cache;** Canyon Creek Camp; Canyon Vil; Caribou; Caribou Bar; Caro; Cathedral Bluffs; Cathedral Rapids; Central; Chalkyitsik; Chandalar; Chapman; **Chatanika;** **Chena;** **Chena Hot Springs;** Chicken; Chisana; Christian; Circle; Circle Hot Springs; **Cleary Summit;** Coal Creek; Cold Foot; **College;** Crooked Creek; Dahten; Dall; Dalton; Delta Junction; Demarcation Pt; Diamond; Dome; Dome Creek; Donnelly; Doran; Dot Lake; Eagle; Eagle Creek; Eagle Village; **Eielson Air Force Base;** **Ester (Bartlett; P.O.);** Evansville (Bettles Field); **Fairbanks;** **Fairbanks Creek Camp;** **Fiftysix Mile Cabin;** Fish Camp; Fishook; Flume Creek; Fort Greely; Fort Hamlin; **Fort Wainwright;** Fort Yukon; Forty-Mile R.H. (Tetlin Junction); Fortysix Mile Cabin; Fossil Cr. S.C.; **Fox;** Franklin; Glacier; Glacier (Mine); Gold Bench; **Goldstream;** **Graehl;** Healy Lake; Heinie Creek; Henshaw Cabin; Horsfeld ; Jack Wade; Joe Ward Camp; John Herbert Village; Johnnie Frog Cabin; Johnson River; Joseph; Kantishna; Kochumstuk; **Lake Harding Store;** Lake Minchumina; Larson Cabin; Liberty; Lilywig Creek; Livengood; Log Cabin Inn; Mansfield Village; **Martin;** McCallum; Miller House; Millers Camp (Aband); Millers R.H.; Montana Creek Camp; **Moose Creek;** Mudbank Cabin; **Murphy Dome;** Muskeg; Myrtle Creek; Nabesna; Nabesna Village; Nation (Aband); Ninemile Cabin; Nineteen Mile; Nolan; **North Pole;** North Slope; Northway; Northway Junction; Old Camp; Old Rampart; **Old Saulich;** **Olmes;** Oscars Cabin; Poker Creek; Yukon Post & Scoby; Richardson; **Riverside;** **Roosevelt;** **Salcha;** **Salchakat;** Salmon; Salmon River; Sam Creek; **Saulich;** Scottie Creek; Seventeen mile; Shaw Creek Lodge; Shuman House; **Silver Fox R.H.;** Sixtymile (Glacier P.O.) Yukon; Sourdough Camp; **South Fork;** Standard; **Steele Creek;** Stephens (Stevens); Swede Boys Camp; Tanacross; Ten Mile; Tenderfoot; Tetlin; Tetlin Jet; Thirtysix Mile; Cabin Tok (Junction); Toklat; Tolovana; Tramway Bar; Tsukon Cabin; Twentyfour Mile Cabin; Twentytwo Mile Village; **Two Rivers;** United States Camp; Venetie; Venetie Landing; Wallen; **West Fork (Aband);** White Eye; Wild Lake; Willow House; Wiseman; Woodchopper (Aband); Woodchopper Creek.

Economic Indicators

FAIRBANKS INTERNATIONAL AIRPORT FREIGHT*
2008-2014

	2008	2009	2010	2011	2012	2013	2014	% Change 2013-14
Incoming	-----Thousands of Pounds-----							
January	710	616	477	1,007	307	449	418	-7%
February	724	647	482	459	500	425	467	10%
March	802	6,189	637	1,120	587	470	554	18%
April	879	627	739	597	557	618	604	-2%
May	914	657	1,752	652	680	622	649	4%
June	1,557	633	1,810	615	663	600	517	-14%
July	983	658	709	678	698	728	841	16%
August	1,045	673	754	716	759	814	759	-7%
September	1,035	706	857	803	707	750	715	-5%
October	930	947	611	637	699	635	700	10%
November	714	529	574	524	574	460	483	5%
December	552	529	501	539	599	425	580	36%
Total	10,845	13,411	9,903	8,347	7,330	6,996	7,287	4%
Outgoing	-----Thousands of Pounds-----							
January	2,182	1,806	2,189	2,883	2,666	1,871	2,205	18%
February	2,681	2,257	2,760	1,539	2,590	2,365	2,561	8%
March	2,677	5,667	3,191	2,776	2,721	1,394	2,578	85%
April	2,935	3,216	2,929	2,482	2,670	2,781	2,711	-3%
May	3,077	2,836	1,863	2,587	4,112	3,162	3,421	8%
June	3,126	3,188	2,511	3,340	3,574	3,740	2,973	-21%
July	3,595	3,624	3,600	3,017	3,830	3,658	3,268	-11%
August	2,930	3,513	3,402	3,650	3,956	3,619	3,057	-16%
September	2,768	3,202	3,652	3,233	4,143	3,003	3,130	4%
October	3,407	2,951	3,023	2,660	2,857	3,043	2,782	-9%
November	2,479	2,595	2,254	2,623	2,310	1,982	2,091	5%
December	2,866	2,017	2,542	2,775	2,725	2,203	1,812	-18%
Total	34,723	36,872	33,916	33,565	38,154	32,821	32,589	-1%

SOURCE: Alaska Department of Transportation and Public Facilities, Fairbanks International Airport, "Fairbanks International Airport Statistical Report", 2008-2014.

NOTE: UPS made a sizeable stop in March 2009. Everts Air Fuel notable stop in May-June 2010. Sizeable stop by a domestic carrier in January 2011. Kalitta Air stopped at FAI March 2011. Frontier Flying Service, Lynden Air Cargo, and Tatonduk Outfitters boosted numbers in May 2012.

* Numbers are preliminary and may be subject to revision.

Economic Indicators

FAIRBANKS INTERNATIONAL AIRPORT TRANSIT FREIGHT*^

2008-2014

	2008	2009	2010	2011	2012	2013	2014	% Change 2013-14
-----Thousands of Pounds-----								
January	299	463	572	886	276	631	313	-50%
February	341	298	1,543	235	282	270	219	-19%
March	335	14,296	1,118	258	361	670	664	-1%
April	338	302	296	297	750	276	86	-69%
May	261	245	342	344	326	291	107	-63%
June	307	361	1,574	342	370	109	97	-11%
July	4,334	359	327	341	397	250	295	18%
August	5,168	350	593	321	350	215	16	-93%
September	329	292	8,508	305	926	40	21	-48%
October	1,294	268	451	309	348	151	83	-45%
November	317	748	993	293	211	469	67	-86%
December	553	940	364	350	301	323	4	-99%
Total	13,876	18,922	16,681	4,281	4,898	3,695	1,972	-47%

SOURCE: Alaska Department of Transportation and Public Facilities, Fairbanks International Airport, "Fairbanks International Airport Statistical Report", 2008-2014.

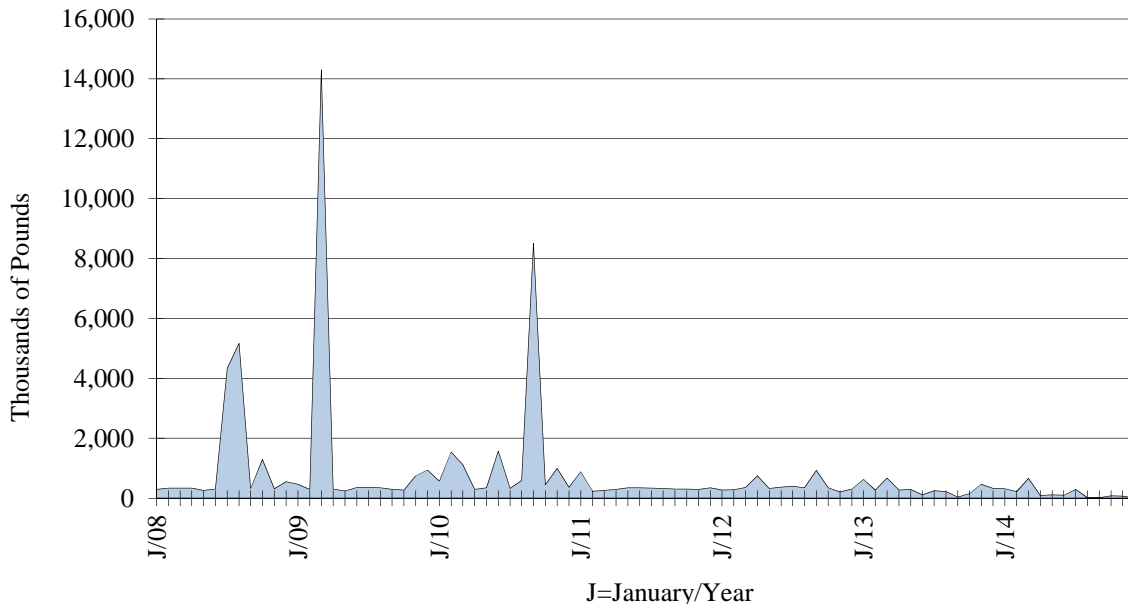
NOTE: On average FAI should see between 70-100 operations from *Volga-Dnepr Airlines* per year. Ukraine-based *Antonov Design Bureau*, made transit landings Feb-Mar 2010.

^ International Airlines: Evergreen and Volga-Dnepr made non-routine stops at FAI in July-August 2008. UPS made a sizeable stop in March 2009. Asiana, Cathay Pacific, China Air, Nippon Cargo, Atlas Air, China Cargo, and Evergreen International plus domestic carriers Fed Ex and UPS had transit landings in September and November 2010. Cathay Pacific and Nippon Cargo boosted numbers reported in Apr 2012, Jan and Mar 2013. Cathay Pacific, Nippon Cargo and China Air increase values in Sept 2012. Number of transit stops in Fairbanks may be dependant on weather in Anchorage. If Anchorage runways are snowed in flights are diverted to Fairbanks. Also in 2013 Alaska Airlines changed airplanes used in flights between Fairbanks and Anchorage to the Q400 planes, which are much smaller and do not have the capacity to carry large amounts of cargo.

* Numbers are preliminary and may be subject to revision.

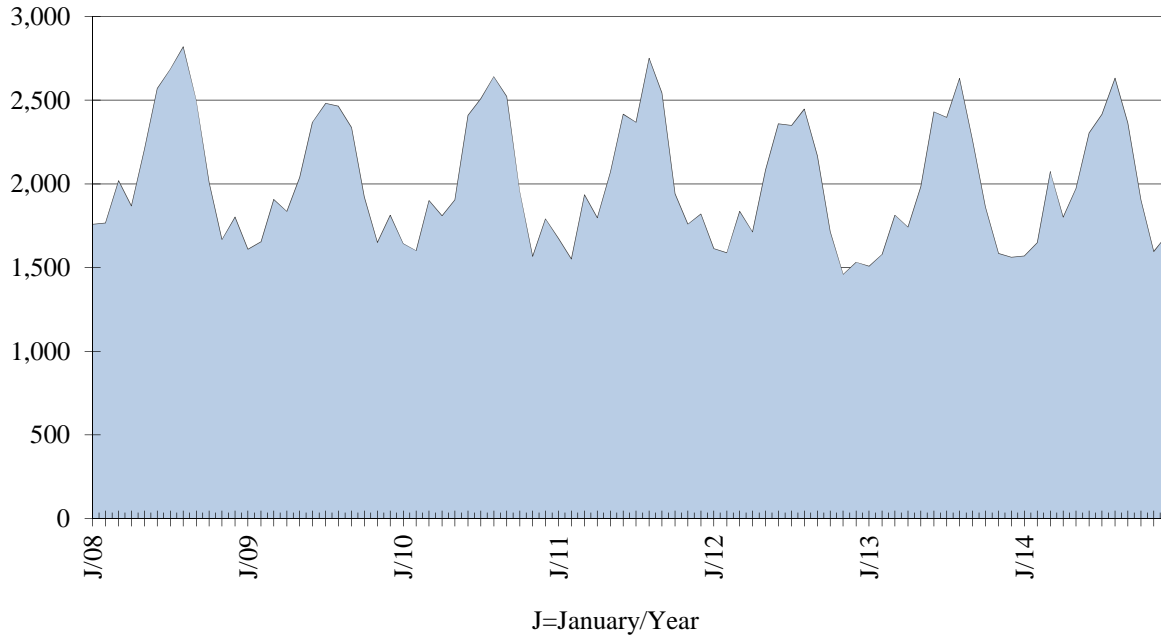
FAIRBANKS INTERNATIONAL AIRPORT TRANSIT FREIGHT

2008-2014



Economic Indicators

FAIRBANKS INTERNATIONAL AIRPORT REVENUE LANDINGS
2008-2014



FAIRBANKS INTERNATIONAL AIRPORT REVENUE LANDINGS*
2008-2014

	2008	2009	2010	2011	2012	2013	2014	% Change 2013-14
January	1,758	1,610	1,643	1,673	1,614	1,508	1,569	4%
February	1,766	1,653	1,601	1,551	1,588	1,578	1,649	4%
March	2,019	1,907	1,900	1,935	1,836	1,813	2,074	14%
April	1,868	1,836	1,810	1,797	1,712	1,742	1,801	3%
May	2,208	2,039	1,906	2,070	2,085	1,983	1,973	-1%
June	2,571	2,370	2,410	2,416	2,360	2,431	2,305	-5%
July	2,686	2,481	2,510	2,368	2,349	2,398	2,416	1%
August	2,820	2,464	2,641	2,751	2,447	2,631	2,632	0%
September	2,503	2,338	2,523	2,544	2,167	2,258	2,365	5%
October	2,009	1,922	1,957	1,942	1,715	1,862	1,904	2%
November	1,668	1,650	1,567	1,760	1,459	1,585	1,596	1%
December	1,802	1,813	1,791	1,820	1,532	1,561	1,693	8%
Total	25,678	24,083	24,259	24,627	22,864	23,350	23,977	3%

SOURCE: Alaska Department of Transportation and Public Facilities, Fairbanks International Airport, "Fairbanks International Airport Statistical Report", 2008-2014.

* Numbers are preliminary and may be subject to revision.

Economic Indicators

FAIRBANKS INTERNATIONAL AIRPORT PASSENGERS*

2008-2014

	2008	2009	2010	2011	2012	2013	2014	% Change 2013-14
Incoming								
January	33,333	32,118	32,275	33,897	33,555	34,474	34,000	-1%
February	31,801	29,051	29,677	30,763	31,566	31,104	32,849	6%
March	35,869	33,266	34,689	39,085	37,380	38,735	43,295	12%
April	30,386	28,065	29,191	30,449	30,156	29,853	31,459	5%
May	45,270	40,536	40,531	41,461	42,888	41,734	42,797	3%
June	60,012	51,532	51,352	51,949	56,506	53,673	56,100	5%
July	60,249	54,055	56,896	55,490	57,927	59,516	61,957	4%
August	64,713	54,191	57,370	57,039	58,021	57,174	60,925	7%
September	39,664	37,907	37,040	38,298	39,404	38,093	39,852	5%
October	31,565	47,049	35,120	32,048	31,710	33,781	33,536	-1%
November	28,568	31,077	29,939	30,024	30,085	29,534	30,834	4%
December	31,534	31,855	32,823	31,408	31,250	33,512	34,859	4%
Total	492,964	470,702	466,903	471,911	480,448	481,183	502,463	4%
Outgoing								
January	29,821	29,763	28,908	30,157	29,447	30,946	30,299	-2%
February	31,495	28,742	28,955	29,911	31,231	30,457	32,386	6%
March	35,259	32,379	34,426	38,609	37,143	38,519	44,297	15%
April	29,871	27,517	29,076	29,943	29,746	29,952	31,562	5%
May	40,420	35,530	36,495	37,776	40,461	38,411	38,924	1%
June	54,765	48,923	47,899	48,027	50,765	49,715	54,636	10%
July	58,257	52,252	54,198	52,019	55,564	56,807	59,333	4%
August	58,267	50,500	53,742	53,832	56,668	56,543	59,422	5%
September	44,796	43,105	44,985	45,230	45,283	45,978	45,950	0%
October	34,349	35,654	36,204	33,996	33,915	35,712	36,223	1%
November	28,909	31,291	30,499	30,905	30,909	30,748	31,816	3%
December	34,171	36,778	36,844	35,921	36,169	37,428	38,780	4%
Total	480,380	452,434	462,231	466,326	477,301	481,216	503,628	5%

SOURCE: Alaska Department of Transportation & Public Facilities, Fairbanks International Airport, "Fairbanks International Airport Statistical Report", 2008-2014.

NOTE: Numbers do not include passengers in transit. Arctic Winter Games took place in Fairbanks March 2014.

* Numbers are preliminary and may be subject to revision.

Economic Indicators

ALASKA HIGHWAY STATEWIDE ENTERING PASSENGERS*

Via the Yukon Territory
2008-2014

	2008	2009	2010	2011	2012	2013	2014	% Change 2013-14
January	2,108	2,388	2,216	2,213	1,868	1,888	2,171	15%
February	2,365	2,419	2,139	2,350	2,037	1,970	1,905	-3%
March	3,681	3,958	3,434	3,992	3,688	3,358	3,172	-6%
April	5,168	4,899	5,662	5,068	4,611	4,592	4,697	2%
May	11,033	12,447	11,989	11,732	10,430	10,290	10,051	-2%
June	17,887	22,929	23,610	22,411	21,800	22,299	19,213	-14%
July	16,946	24,187	21,002	22,964	24,446	23,400	21,105	-10%
August	13,246	18,311	16,553	20,063	18,903	18,272	15,080	-17%
September	5,987	7,954	5,829	7,901	7,409	7,661	5,536	-28%
October	3,832	3,803	3,949	3,512	3,489	3,296	3,317	1%
November	2,096	2,783	2,547	2,424	2,426	2,467	2,495	1%
December	2,145	2,237	2,334	2,016	1,854	2,132	1,210	-43%
Total	86,494	108,315	101,264	106,646	102,961	101,625	89,952	-11%

SOURCE: U.S. Department of Justice, Immigration and Naturalization Service, District 32, (Tok) personal communications, 2008-2014.

NOTE: This entry point includes statewide travel for automobiles on the Alaska Highway and, during the summer, the Taylor Highway (Poker Creek).

* Current year figures subject to revisions.

ALASKA HIGHWAY STATEWIDE EXITING PASSENGERS*

Via the Yukon Territory
2008-2014

	2008	2009	2010	2011	2012	2013	2014	% Change 2013-14
January	1,783	1,491	1,688	1,483	1,485	1,640	1,597	-3%
February	1,812	2,018	1,643	1,657	1,553	1,376	1,457	6%
March	2,455	2,380	2,542	2,297	2,617	2,142	2,275	6%
April	2,608	2,884	3,155	2,615	2,719	2,962	2,425	-18%
May	6,990	7,057	7,358	6,771	6,171	6,092	5,332	-12%
June	15,502	13,932	14,771	15,473	14,116	15,021	12,977	-14%
July	22,729	20,196	24,479	22,377	20,212	19,144	19,136	0%
August	21,827	20,089	11,766	20,734	20,268	20,783	18,180	-13%
September	10,585	10,522	11,196	10,341	9,859	10,157	10,216	1%
October	3,657	4,145	4,673	4,470	3,485	4,135	4,282	4%
November	2,054	2,781	2,070	2,213	2,074	3,035	2,346	-23%
December	1,573	1,998	1,613	1,867	1,942	1,582	1,833	16%
Total	93,575	89,493	86,954	92,298	86,501	88,069	82,056	-7%

SOURCE: Canadian Customs Border Services, Area Ports, Yukon Government, 2008-2014.

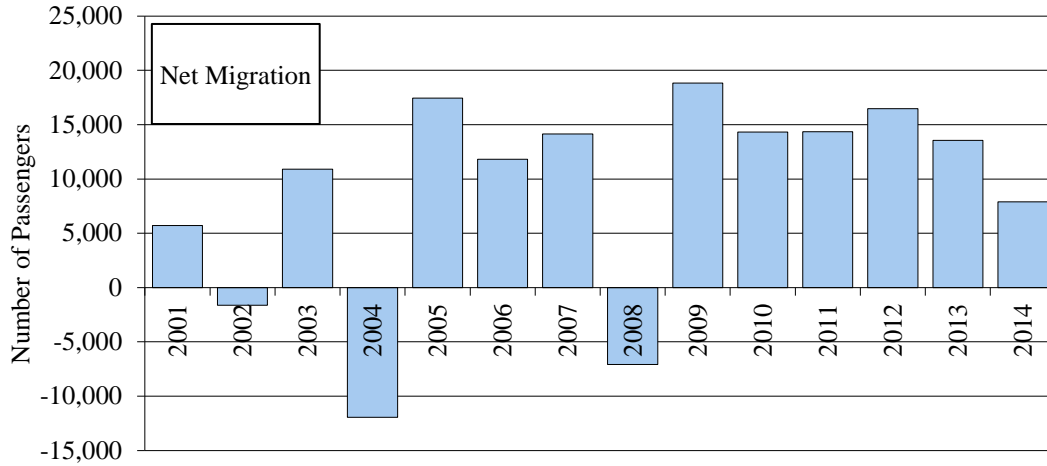
NOTE: This exit point includes statewide travel for automobiles on the Alaska Highway (Beaver Creek) and, during the summer through September 15th, the Taylor Highway (Little Gold).

* Current year figures subject to revisions.

Economic Indicators

ALASKA HIGHWAY STATEWIDE NET ANNUAL MIGRATION TRENDS

Via the Yukon Territory
2001-2014



SOURCE: U.S. Department of Justice, Immigration and Naturalization Service, District 32, and Customs Border Services, Area Ports, Yukon Government, Canada, personal communications 2001-2014.

ALASKA HIGHWAY STATEWIDE NET MONTHLY MIGRATION*

Via the Yukon Territory
2008-2014

	2008	2009	2010	2011	2012	2013	2014
January	325	897	528	730	383	248	574
February	553	401	496	693	484	594	448
March	1,226	1,578	892	1,695	1,071	1,216	897
April	2,560	2,015	2,507	2,453	1,892	1,630	2,272
May	4,043	5,390	4,631	4,961	4,259	4,198	4,719
June	2,385	8,997	8,839	6,938	7,684	7,278	6,236
July	-5,783	3,991	-3,477	587	4,234	4,256	1,969
August	-8,581	-1,778	4,787	-671	-1,365	-2,511	-3,100
September	-4,598	-2,568	-5,367	-2,440	-2,450	-2,496	-4,680
October	175	-342	-724	-958	4	-839	-965
November	42	2	477	211	352	-568	149
December	572	239	721	149	-88	550	-623
Net	-7,081	18,822	14,310	14,348	16,460	13,556	7,896

SOURCE: U.S. Department of Justice, Immigration and Naturalization Service, District 32, and Customs Border Services, Area Ports, Yukon Government, Canada, personal communications 2008-2014.

NOTE: Numbers denote the difference between the number of passengers entering and exiting statewide Alaska on the Alaska Highway and the Taylor Highway (summer only through September 15th).

* Current year figures subject to revisions.

Economic Indicators

HOTEL/MOTEL ROOM RECEIPTS*

Fairbanks North Star Borough
2009-2014

Quarter	2009	2010	2011	2012	2013	2014	% Change 2013-14
1st	\$5,554,495	\$5,549,520	\$6,317,082	\$6,603,066	\$7,170,000	\$8,202,072	14.4%
2nd	\$11,750,227	\$14,817,922	\$13,757,533	\$14,464,988	\$14,031,111	\$14,523,111	3.5%
3rd	\$25,311,523	\$27,183,699	\$26,099,065	\$28,737,266	\$25,686,646	\$25,687,167	0.0%
4th	\$7,176,965	\$6,887,983	\$7,429,594	\$8,886,940	\$10,909,172	\$8,430,551	-22.7%
Total	\$49,793,210	\$54,439,124	\$53,603,274	\$58,692,260	\$57,796,929	\$56,842,901	

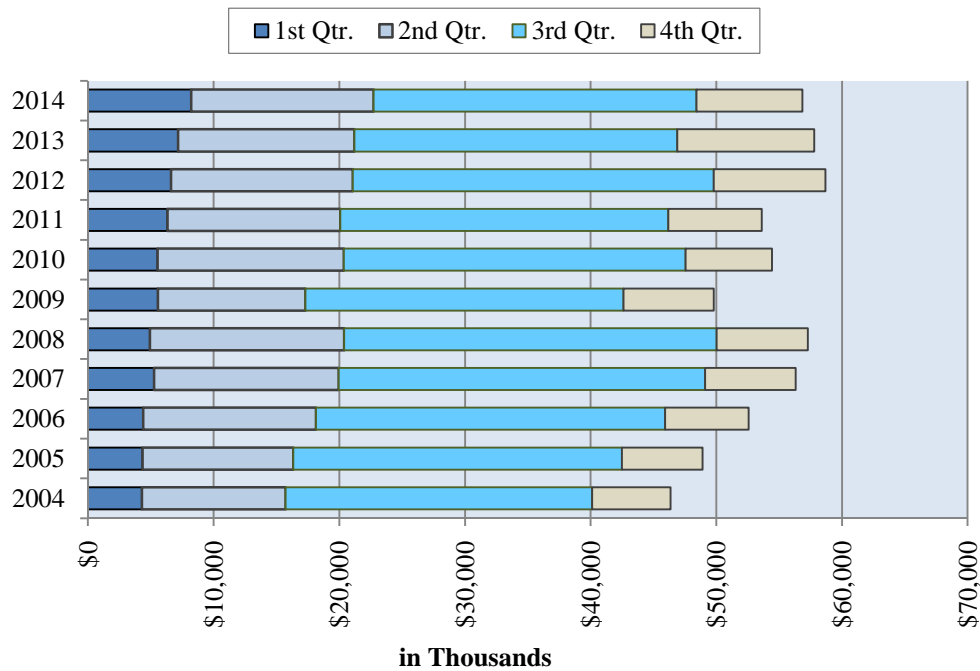
SOURCE: City of Fairbanks, Finance Dept.; City of North Pole, Finance Dept.; FNSB, Financial Services, personal communications, 2009-2014.

NOTE: Room receipt figures are based on hotel/motel bed tax which is 8%. Receipts are calculated on taxes paid. There is a time lag between collection and reporting of these taxes. Arctic Winter Games took place March 2014.

* Due to accrual adjustments the current data will supersede previous figures reported.

QUARTERLY HOTEL/MOTEL ROOM RECEIPTS

Fairbanks North Star Borough
2004-2014



Economic Indicators

ANNUAL HOTEL/MOTEL ROOM RECEIPTS*

Fairbanks North Star Borough
2004-2014

Year	1st Qtr.	2nd Qtr.	3rd Qtr.	4th Qtr.	Annual Total	% Chg fr Prev Yr
2004	\$4,282,186	\$11,444,548	\$24,397,446	\$6,245,425	\$46,369,605	23.9%
2005	\$4,341,420	\$11,991,395	\$26,148,408	\$6,416,203	\$48,897,426	5.5%
2006	\$4,396,630	\$13,755,407	\$27,784,543	\$6,628,268	\$52,564,848	7.5%
2007	\$5,253,550	\$14,703,344	\$29,164,266	\$7,198,573	\$56,319,733	7.1%
2008	\$4,928,353	\$15,450,099	\$29,652,248	\$7,251,731	\$57,282,431	1.7%
2009	\$5,554,495	\$11,750,227	\$25,311,523	\$7,176,965	\$49,793,210	-13.1%
2010	\$5,549,520	\$14,817,922	\$27,183,699	\$6,887,983	\$54,439,124	9.3%
2011	\$6,317,082	\$13,757,533	\$26,099,065	\$7,429,594	\$53,603,274	-1.5%
2012	\$6,603,066	\$14,464,988	\$28,737,266	\$8,886,940	\$58,692,260	9.5%
2013	\$7,170,000	\$14,031,111	\$25,686,646	\$10,909,172	\$57,796,929	-1.5%
2014	\$8,202,072	\$14,523,111	\$25,687,167	\$8,430,551	\$56,842,901	-1.7%

SOURCE: Fairbanks North Star Borough, City of Fairbanks, and City of North Pole, Finance Departments, personal communications 2004-2014.

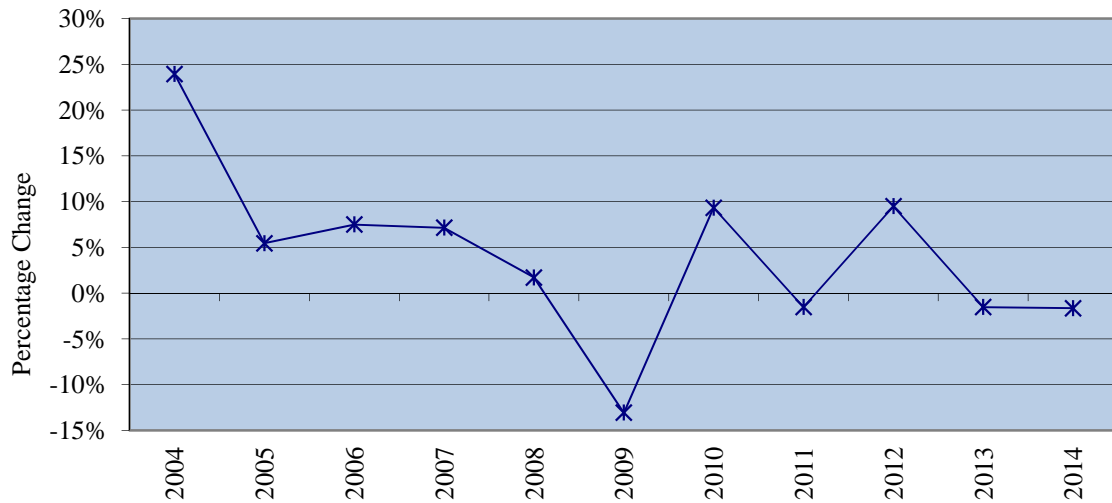
NOTE: Room receipt figures are based on hotel/motel bed tax which is 8%. Receipts are calculated on taxes paid. There is a time lag between collection and reporting of these taxes.

City of North Pole was added beginning second quarter 2009.

* Due to accrual adjustments the current figure supersedes previous figures.

ANNUAL HOTEL/MOTEL ROOM RECEIPTS

Fairbanks North Star Borough
2004-2014



Economic Indicators

UNIVERSITY OF ALASKA MUSEUM VISITORS

Fairbanks, Alaska
2009-2014

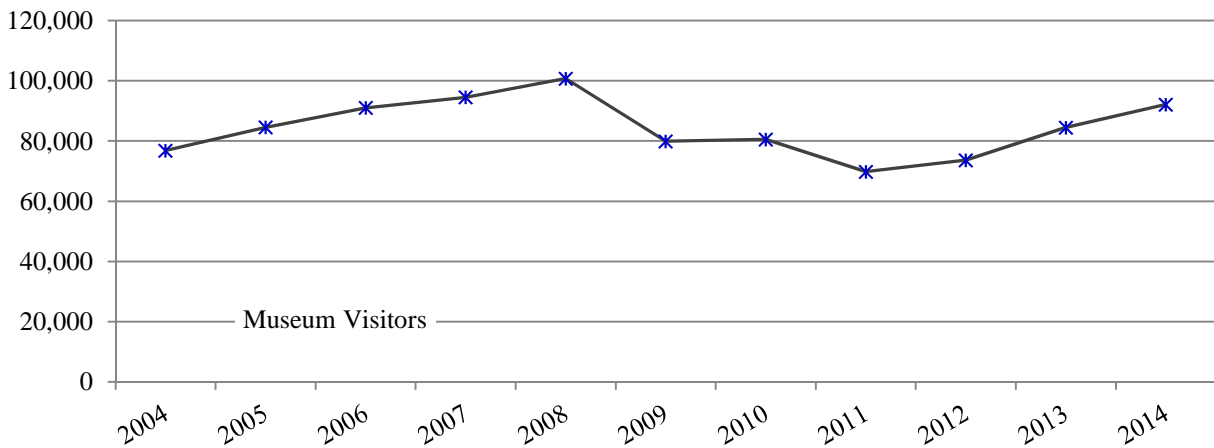
	2009	2010	2011	2012	2013	2014	% Change 2013-14
January	2,236	1,647	1,705	2,235	3,170	4,697	48%
February	4,502	4,465	3,199	3,969	3,705	6,201	67%
March	3,394	3,725	4,230	5,934	6,871	9,634	40%
April	2,328	2,272	2,525	2,911	2,664	4,657	75%
May	5,767	5,367	4,303	5,100	4,859	4,721	-3%
June	15,275	14,051	12,517	11,236	10,956	12,070	10%
July	16,548	16,587	14,169	13,668	14,746	14,876	1%
August	14,709	14,193	12,851	12,536	12,993	13,336	3%
September	7,567	7,698	6,743	7,137	8,163	6,489	-21%
October	3,249	4,207	2,841	3,534	6,116	5,525	-10%
November	1,886	2,567	2,124	1,718	4,206	4,350	3%
December	2,437	3,785	2,588	3,662	6,013	5,572	-7%
Total	79,898	80,564	69,795	73,640	84,462	92,128	9%

SOURCE: University of Alaska Museum, University of Alaska, Fairbanks, personal communications 2009-2014.

NOTE: Numbers are preliminary and may be subject to revision. The Fairbanks Children's Museum opened October 2013 in the museum's auditorium and remained there until the end of April 2014. Arctic Winter Games took place March 2014. Beginning January 2014 and continuing throughout 2014, a Wells Fargo sponsorship will pay entrance fees for active-duty military families.

UNIVERSITY OF ALASKA MUSEUM VISITORS

Fairbanks, Alaska
2004-2014



EMPLOYMENT

CIVILIAN LABOR FORCE UNEMPLOYMENT RATES*

Fairbanks MSA, Alaska and the United States
2008-2014

		2008	2009	2010	2011	2012	2013	2014
F	January	6.4	7.7	8.5	7.9	7.5	7.2	6.5
A	February	6.3	7.6	8.3	7.6	7.4	6.7	6.6
I	March	6.1	7.5	8.1	7.3	7.1	6.2	6.2
R	April	5.5	6.8	7.2	6.7	6.5	5.9	5.4
B	May	5.5	6.9	6.5	6.3	6.0	5.6	5.3
A	June	6.2	7.6	6.7	6.9	6.6	6.4	6.1
N	July	5.5	6.7	6.2	6.2	6.1	5.5	5.5
K	August	5.3	6.3	6.0	6.1	5.5	5.2	5.5
S	September	5.3	6.6	6.0	5.9	5.1	5.0	5.0
	October	5.5	6.9	6.2	6.0	5.1	5.2	5.3
M	November	5.9	7.0	6.8	6.4	5.6	5.4	5.5
S	December	6.4	7.3	7.0	6.8	6.2	5.4	5.6
A	Average	5.8	7.1	6.9	6.7	6.2	5.8	
	January	7.1	8.0	9.2	8.8	8.1	7.8	7.4
	February	7.1	8.3	9.3	8.6	8.0	7.4	7.7
	March	7.1	8.2	9.1	8.3	7.8	7.0	7.3
A	April	6.4	7.7	8.4	7.8	7.2	6.6	6.4
L	May	6.3	7.5	7.6	7.3	6.8	6.3	6.0
A	June	6.5	8.0	7.8	7.7	7.3	6.9	6.7
S	July	5.8	7.2	7.1	6.9	6.6	6.0	6.1
K	August	5.7	7.0	6.9	6.7	6.2	5.8	6.2
A	September	5.7	7.3	7.0	6.8	5.9	5.8	5.8
	October	5.9	7.7	7.2	6.9	6.0	6.2	5.9
	November	6.4	7.8	7.8	7.3	6.4	6.3	6.2
	December	6.9	8.2	8.1	7.7	7.0	6.5	6.3
	Average	6.4	7.7	8.0	7.6	6.9	6.5	
U	January	5.4	8.5	10.6	9.8	8.8	8.5	7.0
N	February	5.2	8.9	10.4	9.5	8.7	8.1	7.0
I	March	5.2	9.0	10.2	9.2	8.4	7.6	6.8
T	April	4.8	8.6	9.5	8.7	7.7	7.1	5.9
E	May	5.2	9.1	9.3	8.7	7.9	7.3	6.1
D	June	5.7	9.7	9.6	9.3	8.4	7.8	6.3
	July	6.0	9.7	9.7	9.3	8.6	7.7	6.5
S	August	6.1	9.6	9.5	9.1	8.2	7.3	6.3
T	September	6.0	9.5	9.2	8.8	7.6	7.0	5.7
A	October	6.1	9.5	9.0	8.5	7.5	7.0	5.5
T	November	6.5	9.4	9.3	8.2	7.4	6.6	5.5
E	December	7.1	9.7	9.1	8.3	7.6	6.5	5.4
S	Average	5.8	9.3	9.6	8.9	8.1	7.4	6.2

SOURCES: Alaska Department of Labor, Research and Analysis Section, website: <http://www.laborstats.alaska.gov>, and personal communications 2008-2014. U.S. Department of Labor, Bureau of Labor Statistics, *Current Population Survey*, and website: <http://www.bls.gov>, 2008-2014.

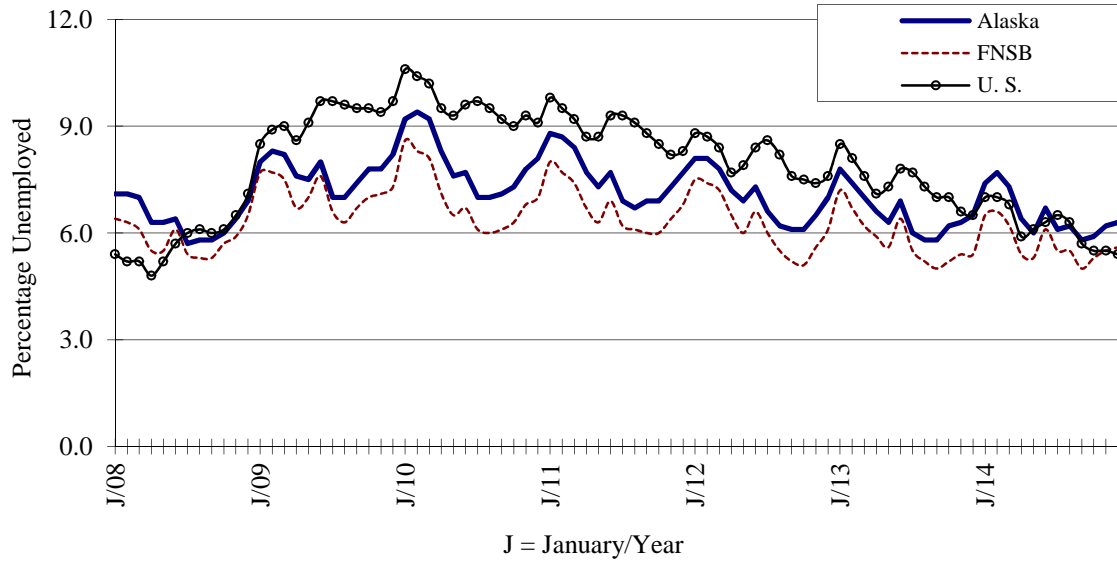
NOTE: Rates presented are "not seasonally adjusted". A change in the way the labor force statistics are calculated for boroughs and census areas makes data prior to 2000 not comparable with later data.

* May be subject to revision.

Employment

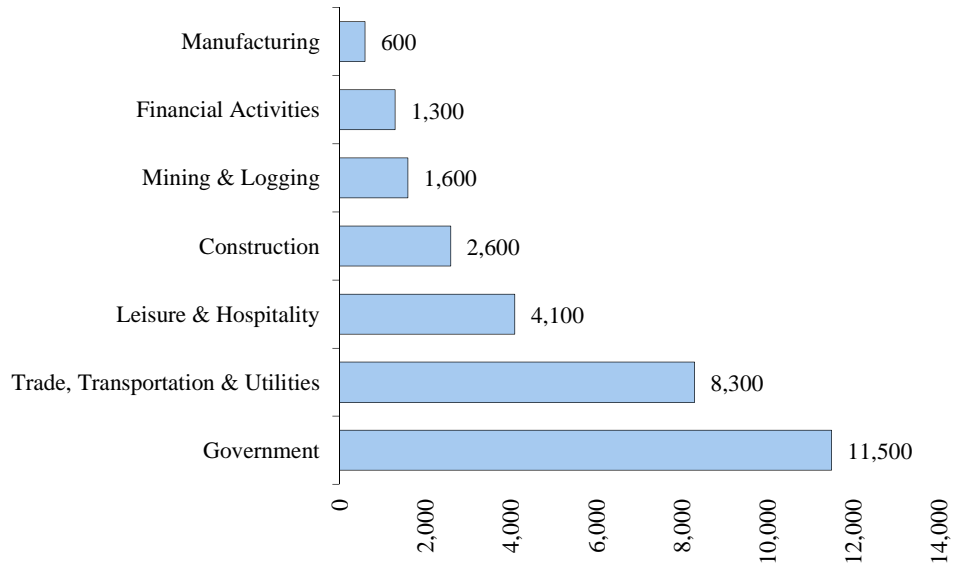
CIVILIAN LABOR FORCE UNEMPLOYMENT RATES

State of Alaska, FNSB, the United States
2008-2014



AVERAGE MONTHLY EMPLOYMENT ESTIMATES BY SECTOR

Fairbanks North Star Borough
Annual Average 2014



Employment

AVERAGE MONTHLY EMPLOYMENT ESTIMATES BY INDUSTRY

Fairbanks North Star Borough (MSA¹)

2014

Industry	2014				Year-to-Date Average		% Change 2013-14
	1st Qtr	2nd Qtr	3rd Qtr	4th Qtr	2014 Jan-Dec	2013 Jan-Dec	
Mining and Logging³	1,400	1,600	1,800	1,600	1,600	1,500	6.7%
Construction	1,900	2,600	3,400	2,600	2,600	2,400	8.3%
Manufacturing	600	600	600	500	600	600	0.0%
Trade, Transportation, Utilities	7,800	8,400	8,600	8,300	8,300	7,900	5.1%
Wholesale Trade	700	800	800	800	800	700	14.3%
Retail Trade	4,600	4,800	4,900	5,000	4,800	4,700	2.1%
Trans/Warehouse/Utilities	2,400	2,800	2,900	2,600	2,700	2,500	8.0%
Information	500	500	500	500	500	500	0.0%
Financial Activities	1,200	1,300	1,300	1,300	1,300	1,300	0.0%
Professional & Business Svcs	2,000	2,100	2,300	2,300	2,200	2,400	-8.3%
Educational & Health Services	5,400	5,400	5,400	5,400	5,400	5,400	0.0%
Health Care	3,900	3,900	4,000	4,000	4,000	4,000	0.0%
Leisure & Hospitality	3,800	4,300	4,600	3,600	4,100	4,200	-2.4%
Other Services	1,200	1,200	1,200	1,200	1,200	1,300	-7.7%
Government	11,700	11,500	11,000	11,700	11,500	11,700	-1.7%
Federal Government	2,700	2,900	2,900	2,800	2,900	3,000	-3.3%
State Government	5,500	5,400	5,200	5,500	5,400	5,500	-1.8%
Local Government ²	3,400	3,100	2,900	3,400	3,200	3,200	0.0%
Total Nonfarm	37,500	39,400	40,600	39,100	39,200	39,000	0.5%

SOURCE: Alaska Department of Labor and Workforce Development, Research and Analysis Section; U.S. Department of Labor, Bureau of Labor Statistics. State website: <http://labor.alaska.gov/research/ces/ces.htm>, 2015.

NOTE: Data provided are subject to change. Employment reporting format has changed because Fairbanks became a metropolitan area in 2003 and 2004. Please note that rounding is to nearest 100.

- Excludes self-employed workers, fishers, domestics, and unpaid family workers.
- Government includes employees of public school systems and the University of Alaska.
- Beginning January 2001, wage and salary employment estimates were published under a new classification system. The Standard Industrial Classification system (SIC) has been replaced by the North American Industry Classification System (NAICS). Data prior to 2001 are comparable only at the Total Nonfarm and Government levels.

¹ Metropolitan Statistical Area.

Employment

ANNUAL AVERAGE MONTHLY EMPLOYMENT BY INDUSTRY

Fairbanks North Star Borough
2010-2013

Industry	2010	2011	2012	2013	% Change 2012-13
Natural Resources & Mining	1,161	1,330	1,517	1,489	-1.8%
Agriculture, Forestry, Fishing, Hunting	45	48	49	48	-2.0%
Mining	1,117	1,282	1,468	1,441	-1.8%
Construction	2,641	2,596	2,618	2,431	-7.1%
Construction of Buildings	751	771	806	654	-18.9%
Heavy Construction	374	404	331	426	28.7%
Specialty Trade Contractors	1,517	1,421	1,482	1,351	-8.8%
Manufacturing	604	575	556	616	10.8%
Trade, Transportation & Utilities	7,642	7,760	7,910	7,789	-1.5%
Wholesale Trade	654	661	705	735	4.3%
Retail Trade	4,551	4,659	4,734	4,643	-1.9%
Food & Beverage	471	463	480	461	-4.0%
General Merchandise	1,341	1,338	1,352	1,299	-3.9%
Transportation & Warehousing	2,020	2,016	2,077	2,018	-2.8%
Air Transportation	607	593	595	538	-9.6%
Transit & Ground Passenger	299	295	303	305	0.7%
Information	497	549	548	485	-11.5%
Telecommunication	296	293	297	243	-18.2%
Financial Activities	1,553	1,445	1,427	1,416	-0.8%
Finance & Insurance	877	799	805	784	-2.6%
Credit Intermediation, etc.	517	510	513	513	0.0%
Real Estate, Renting & Leasing	676	647	622	632	1.6%
Real Estate	428	404	387	406	4.9%
Professional & Business Services	2,368	2,511	2,517	2,402	-4.6%
Professional, Scientific, Technical Services	1,515	1,539	1,494	1,472	-1.5%
Management of Companies & Enterprises	53	120	118	122	3.4%
Administrative & Waste Services	800	852	905	808	-10.7%
Educational & Health Services	4,910	4,951	5,155	5,229	1.4%
Health Care & Social Assistance	4,675	4,720	4,910	5,012	2.1%
Leisure & Hospitality	4,084	4,129	4,189	4,180	-0.2%
Accommodation	969	1,029	1,074	1,089	1.4%
Food Services & Drinking Places	2,671	2,691	2,672	2,636	-1.3%
Other Services	1,116	1,132	1,183	1,151	-2.7%
Membership Organizations, etc.	510	509	500	408	-18.4%
Repair & Maintenance	403	403	421	496	17.8%
Government	12,072	12,010	11,677	11,641	-0.3%
Federal Government	3,495	3,434	3,264	3,026	-7.3%
State Government	5,487	5,461	5,445	5,472	0.5%
Local Government	3,090	3,115	2,968	3,143	5.9%
Unclassified Establishments	39	29	27	33	22.2%
Total Industries	38,688	39,018	39,323	38,859	-1.2%

SOURCE: Alaska Department of Labor and Workforce Development, Research and Analysis Section; *Quarterly Census of Employment & Wages-Annual Review 2013*, (data are preliminary and subject to revision).

NOTE: Blanks in the Total Earnings and Average Monthly Earnings columns due to confidentiality; data are suppressed.

Employment

ANNUAL AVERAGE MONTHLY WAGE BY INDUSTRY

Fairbanks North Star Borough
2010-2013

Industry	2010	2011	2012	2013	% Change 2012-13
Natural Resources & Mining	\$7,348	\$7,311	\$7,559	\$7,455	-1.4%
Agriculture, Forestry, Fishing, Hunting	\$1,711	\$1,506	\$1,513	\$1,509	-0.3%
Mining	\$7,574	\$7,530	\$7,761	\$7,654	-1.4%
Construction	\$5,922	\$5,881	\$6,146	\$6,306	2.6%
Construction of Buildings	\$5,382	\$5,406	\$5,222	\$5,363	2.7%
Heavy Construction	\$6,217	\$6,809	\$7,863	\$7,958	1.2%
Specialty Trade Contractors	\$6,117	\$5,874	\$6,261	\$6,241	-0.3%
Manufacturing	\$4,416	\$4,618	\$4,664	\$4,436	-4.9%
Trade, Transportation & Utilities	\$3,240	\$3,274	\$3,307	\$3,376	2.1%
Wholesale Trade	\$4,035	\$4,223	\$4,345	\$4,540	4.5%
Retail Trade	\$2,549	\$2,563	\$2,603	\$2,604	0.0%
Food & Beverage	\$2,358	\$2,417	\$2,402	\$2,259	-6.0%
General Merchandise	\$2,342	\$2,340	\$2,328	\$2,377	2.1%
Transportation & Warehousing	\$3,849	\$3,858	\$3,808	\$3,966	4.1%
Air Transportation	\$3,693	\$3,552	\$3,389	\$3,905	15.2%
Transit & Ground Passenger	\$2,272	\$2,307	\$2,419	\$2,390	-1.2%
Information	\$4,258	\$4,123	\$4,096	\$4,468	9.1%
Telecommunication	\$5,026	\$5,407	\$5,262	\$6,288	19.5%
Financial Activities	\$3,878	\$3,847	\$3,907	\$4,011	2.7%
Finance & Insurance	\$4,238	\$4,086	\$4,166	\$4,285	2.9%
Credit Intermediation, etc.	\$3,914	\$3,997	\$4,113	\$4,070	-1.0%
Real Estate, Renting & Leasing	\$3,410	\$3,552	\$3,572	\$3,673	2.8%
Real Estate	\$3,236	\$3,269	\$3,343	\$3,433	2.7%
Professional & Business Services	\$3,848	\$3,891	\$4,137	\$4,256	2.9%
Professional, Scientific, Technical Services	\$4,229	\$4,199	\$4,443	\$4,608	3.7%
Management of Companies & Enterprises	\$5,871	\$6,321	\$7,241	\$7,294	0.7%
Administrative & Waste Services	\$2,996	\$2,990	\$3,227	\$3,157	-2.2%
Educational & Health Services	\$3,472	\$3,642	\$3,684	\$3,777	2.5%
Health Care & Social Assistance	\$3,512	\$3,691	\$3,737	\$3,842	2.8%
Leisure & Hospitality	\$1,487	\$1,531	\$1,550	\$1,617	4.3%
Accommodation	\$2,183	\$2,189	\$2,159	\$2,241	3.8%
Food Services & Drinking Places	\$1,278	\$1,303	\$1,327	\$1,387	4.5%
Other Services	\$2,369	\$2,483	\$2,394	\$2,378	-0.7%
Membership Organizations, etc.	\$1,852	\$1,949	\$1,916	\$1,907	-0.5%
Repair & Maintenance	\$3,389	\$3,625	\$3,497	\$3,472	-0.7%
Government	\$4,297	\$4,423	\$4,549	\$4,510	-0.9%
Federal Government	\$5,220	\$5,469	\$5,585	\$5,565	-0.4%
State Government	\$4,004	\$4,077	\$4,172	\$4,226	1.3%
Local Government	\$3,774	\$3,877	\$4,101	\$3,989	-2.7%
Unclassified Establishments	\$2,081	\$1,641	\$1,451	\$1,872	29.0%
Total Industries	\$3,789	\$3,870	\$3,968	\$3,997	0.7%

SOURCE: Alaska Department of Labor and Workforce Development, Research and Analysis Section; *Quarterly Census of Employment & Wages - Annual Review 2013*, (data are preliminary and subject to revision).

NOTE: Blanks in the Total Earnings and Average Monthly Earnings columns due to confidentiality; data are suppressed.

Employment

QUARTERLY CENSUS OF EMPLOYMENT AND WAGES BY INDUSTRY*

Fairbanks North Star Borough

By Quarter

Industry	--2Q 2014 Avg Mo--		--3Q 2014 Avg Mo--		% Chg from prev Qtr	
	Employmt	Wage	Employmt	Wage	Employmt	Wage
Natural Resources & Mining	1,473	\$7,863	1,682	\$7,804	14.2%	-0.8%
Agriculture, Forestry, Fishing, Hunting	85	\$1,502	44	\$1,718	-48.2%	14.4%
Mining	1,388	\$8,253	1,638	\$7,968	18.0%	-3.5%
Construction	2,612	\$6,367	3,166	\$7,126	21.2%	11.9%
Construction of Buildings	618	\$5,304	752	\$5,912	21.7%	11.5%
Heavy Construction	536	\$7,784	612	\$9,051	14.2%	16.3%
Specialty Trade Contractors	1,458	\$6,296	1,803	\$6,975	23.7%	10.8%
Manufacturing	630	\$4,403	645	\$4,173	2.4%	-5.2%
Trade, Transportation & Utilities	7,872	\$3,353	8,063	\$3,390	2.4%	1.1%
Wholesale Trade	738	\$4,608	765	\$4,546	3.7%	-1.3%
Retail Trade	4,719	\$2,556	4,743	\$2,596	0.5%	1.6%
Food & Beverage	470	\$2,352	483	\$2,536	2.8%	7.8%
General Merchandise Stores	1,237	\$2,355	1,280	\$2,559	3.5%	8.7%
Transportation & Warehousing	2,016	\$4,028	2,140	\$4,046	6.2%	0.4%
Air Transportation	511	\$4,140	510	\$4,037	-0.2%	-2.5%
Transit & Ground Passenger	258	\$3,227	258	\$2,123	0.0%	-34.2%
Information	442	\$4,681	462	\$4,881	4.5%	4.3%
Telecommunication	227	\$6,447	233	\$6,247	2.6%	-3.1%
Financial Activities	1,310	\$3,831	1,346	\$3,772	2.7%	-1.5%
Finance & Insurance	688	\$3,836	695	\$3,830	1.0%	-0.2%
Credit Intermediation, etc.	510	\$3,870	520	\$3,890	2.0%	0.5%
Real Estate, Renting & Leasing	622	\$3,825	650	\$3,716	4.5%	-2.8%
Real Estate	403	\$3,506	424	\$3,346	5.2%	-4.6%
Professional & Business Services	2,234	\$3,926	2,334	\$3,992	4.5%	1.7%
Professional, Scientific, Technical Services	1,281	\$4,335	1,304	\$4,345	1.8%	0.2%
Management of Companies & Enterprises	121	\$6,704	125	\$5,673	3.3%	-15.4%
Administrative & Waste Services	832	\$2,892	904	\$3,254	8.7%	12.5%
Educational & Health Services	5,145	\$3,942	5,159	\$3,818	0.3%	-3.1%
Health Care & Social Assistance	4,945	\$4,010	4,954	\$3,883	0.2%	-3.2%
Leisure & Hospitality	4,455	\$1,655	4,726	\$1,738	6.1%	5.0%
Accommodation	1,221	\$2,297	1,432	\$2,229	17.3%	-3.0%
Food Services & Drinking Places	2,745	\$1,393	2,739	\$1,521	-0.2%	9.2%
Other Services	1,151	\$2,529	1,160	\$2,694	0.8%	6.5%
Repair & Maintenance	457	\$3,645	444	\$4,103	-2.8%	12.6%
Membership Organizations, etc.	463	\$1,879	485	\$1,889	4.8%	0.5%
Government	11,310	\$5,107	10,771	\$4,639	-4.8%	-9.2%
Federal Government	2,932	\$6,008	2,925	\$6,194	-0.2%	3.1%
State Government	5,434	\$4,757	5,167	\$4,316	-4.9%	-9.3%
Local Government	2,944	\$4,856	2,679	\$3,564	-9.0%	-26.6%
Unclassified Establishments	59	\$2,460	70	\$2,453	18.6%	-0.3%
Total Industries	38,694	\$4,179	39,584	\$4,131	2.3%	-1.1%

SOURCE: Alaska Department of Labor and Workforce Development, Research and Analysis Section; *Quarterly Census of Employment & Wages (QCEW)* fka *Employment & Earnings Summary*, State of Alaska website: <http://almis.labor.state.ak.us> and personal communications, 3rd Qtr. 2014.

* All numbers are preliminary and subject to revision. There is an approximate 6 month lag in data release.

HOUSING

APARTMENT / MULTI-PLEX VACANCY RATES ^ Fairbanks North Star Borough 2010-2014

	2010	2011^	2012	2013	2014
	-----Percent Vacant-----				
March	6.9	8.8	8.7	9.5	15.0
June	7.6	10.2	2.1	8.3	15.8
September	8.9	13.3	6.1	12.7	15.3
December	10.1	15.5	9.6	14.7	17.7

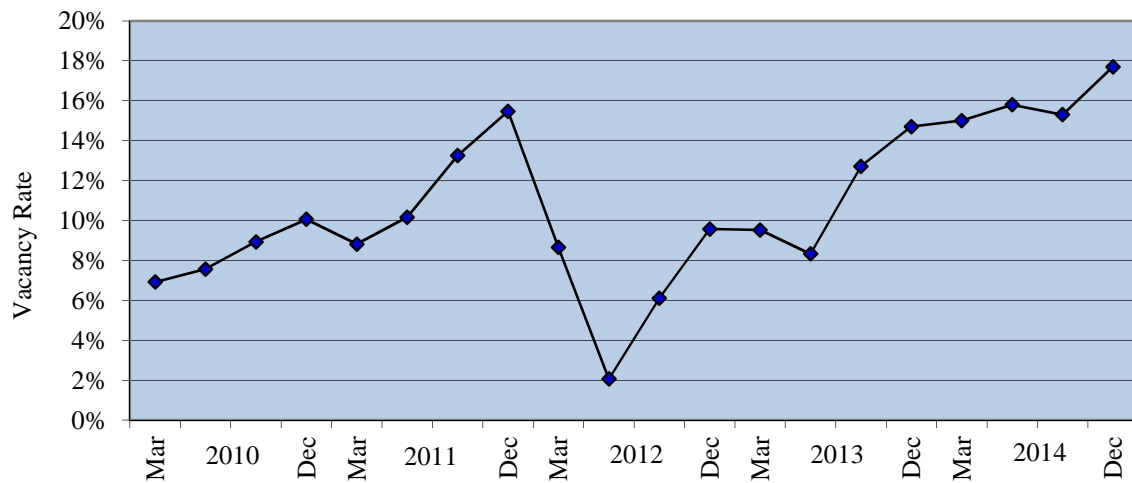
SOURCE: FNSB Community Research Center Rental Survey, 2010-2014.

NOTE: Vacancy rates are based on a sample of 2,000 to 3,000 rental units and include data for apartments, duplexes, tri-plexes and larger multi-plex rental properties. They do not include single-family houses, mobile homes or cabins. Changes in seasonal apartment availability may also factor into the Fall and Winter figures.

Vacancy influences: The Ft. Wainwright Army 172nd Stryker Brigade was deployed to Iraq in Fall-Winter 2008-09, Spring-Summer 2011-12, and the Military Police in Fall-Winter 2013-2014. Ft. Wainwright base housing privatized and contracted management to New Haven Communities in May 2009 with additional new construction through 2013. Weeks Field Estates has replaced Fairview Manor with 130 affordable housing units in 2009-2011. Walden Estates, once off-base military housing, privatized and placed 150 units; 3-5 bdrms., on the market for sale or rent (27:duplexes; 23:4-plexes; 4:houses) in June 2010 (PHII). The Ft. Wainwright Army 1st Battalion, 52nd Aviation Regiment, approximately 360 soldiers, deployed for nine-month tour beginning March 2014. The 6th Squadron, 17th Cavalry Regiment, U.S. Army Alaska Aviation Task Force, approximately 400 soldiers, deployed for a nine-month tour beginning May 2014.

^ Correction made to March 2011 data on June 24, 2011.

APARTMENT / MULTI-PLEX VACANCY RATES Fairbanks North Star Borough 2010-2014



Housing

RENTAL HOUSING UNITS AVAILABLE ^

Fairbanks North Star Borough
2010-2014

	----- Apartments -----				----- Houses -----				Mobile Homes	Cabins	Total Rentals
	Eff.	1-BR	2-BR	3+BR	1-BR	2-BR	3-BR	4+BR			
2010											
March	38	95	93	74	5	5	16	6	-	16	348
June	34	64	107	108	2	5	8	6	2	10	346
September	70	121	112	103	1	16	36	15	6	21	501
December	51	173	143	80	5	15	18	12	2	23	522
2011											
March ^	41	146	120	66	5	11	8	15	1	12	425
June	40	170	180	116	4	16	45	7	3	30	611
September	84	199	239	100	9	25	45	12	3	35	751
December	64	242	214	134	9	17	19	22	3	26	750
2012											
March	30	159	121	41	1	4	15	9	4	21	405
June	10	35	57	18	0	8	9	5	3	29	174
September	29	65	103	114	3	9	38	16	1	28	406
December	24	114	128	141	1	4	12	13	-	22	459
2013											
March	20	114	124	147	2	7	18	10	2	11	455
June	22	72	128	119	4	9	19	11	2	18	404
September	30	100	166	163	5	23	48	23	3	32	593
December	23	182	236	118	8	19	80	17	7	32	722
2014											
March	25	154	271	137	8	12	39	14	10	20	690
June	38	155	261	114	5	9	15	18	5	27	647
September	48	190	286	142	4	12	28	12	1	24	747
December	38	241	280	146	2	15	10	6	-	25	763
% Change											
2013-14	65%	32%	19%	24%	-75%	-21%	-88%	-65%	-	-22%	6%
Dec.											

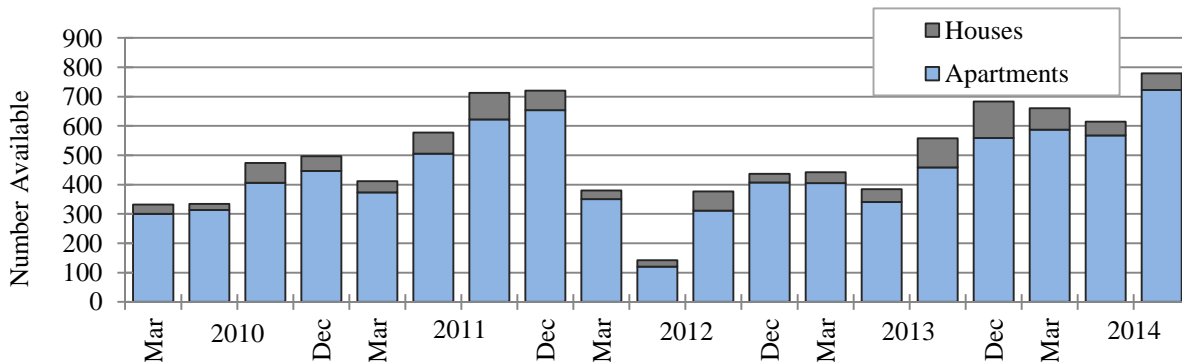
SOURCE: Community Research Center rental surveys, 2010-2014, including most major apartment complexes, *Fairbanks Daily News-Miner* advertisements, and <http://www.craigslist.com> during the week surrounding the 19th of March, June, September and March.

NOTE: Aging Fairview Manor demolished the last units in the fall 2011. Weeks Field Estates has replaced them with 130 affordable housing units in 2009-2011. Walden Estates, once off-base military housing, privatized and placed 150 units; 3-5 bdrms. on the market for sale or rent (27:duplexes; 23:4-plexes; 4:houses) in June 2010 (PHID). By September 2010 all units were under contract with none available for rent. B&B's come off survey in May & back on in September. See *Vacancy Rates* footer for military deployments

^ Correction made to March 2011 data on June 24, 2011.

RENTAL HOUSING UNITS AVAILABLE

Fairbanks North Star Borough
2010-2014



Housing

AVERAGE MONTHLY RENTS FOR AVAILABLE HOUSING UNITS ^

Fairbanks North Star Borough
2010-2014

	----- Apartments -----				----- Houses -----				Mobile Homes	Cabins
	Eff.	1-BR	2-BR	3+ BR	1-BR	2-BR	3-BR	4+ BR		
2010										
March	\$617	\$817	\$1,028	\$1,763	\$960	\$1,489	\$1,516	\$2,073	-	\$562
June	\$685	\$874	\$1,063	\$1,837	\$1,125	\$1,310	\$1,606	\$1,903	\$1,300	\$535
September	\$842	\$901	\$1,124	\$1,613	\$950	\$1,288	\$1,649	\$2,101	\$795	\$589
December	\$737	\$901	\$1,102	\$1,583	\$840	\$1,319	\$1,588	\$2,098	\$925	\$608
2011										
March ^	\$644	\$904	\$1,143	\$1,571	\$990	\$1,350	\$1,481	\$2,245	\$850	\$570
June	\$723	\$901	\$1,136	\$1,642	\$1,137	\$1,318	\$1,632	\$2,187	\$800	\$628
September	\$833	\$906	\$1,073	\$1,629	\$969	\$1,248	\$1,647	\$2,233	\$750	\$657
December	\$770	\$897	\$1,100	\$1,693	\$863	\$1,141	\$1,728	\$2,217	\$866	\$599
2012										
March	\$722	\$926	\$1,163	\$1,454	\$850	\$1,100	\$1,586	\$2,104	\$725	\$557
June	\$600	\$885	\$1,133	\$1,462	NA	\$1,268	\$1,664	\$1,720	\$881	\$595
September	\$951	\$908	\$1,185	\$1,901	\$950	\$1,433	\$1,775	\$2,140	\$1,000	\$661
December	\$905	\$927	\$1,155	\$1,861	\$900	\$1,381	\$1,650	\$2,107	-	\$571
2013										
March	\$656	\$920	\$1,190	\$1,720	\$912	\$1,185	\$1,787	\$2,215	\$1,200	\$570
June	\$645	\$920	\$1,181	\$1,797	\$981	\$1,369	\$1,664	\$2,437	\$625	\$520
September	\$959	\$919	\$1,215	\$1,698	\$1,035	\$1,390	\$1,661	\$2,185	\$858	\$635
December	\$768	\$1,047	\$1,234	\$1,698	\$1,011	\$1,243	\$1,820	\$1,951	\$900	\$615
2014										
March	\$700	\$1,036	\$1,215	\$1,609	\$1,015	\$1,291	\$1,523	\$2,217	\$1,022	\$611
June	\$717	\$935	\$1,201	\$1,577	\$970	\$1,278	\$1,856	\$2,155	\$770	\$664
September	\$847	\$933	\$1,197	\$1,586	\$912	\$1,241	\$1,762	\$1,912	\$850	\$682
December	\$700	\$939	\$1,195	\$1,505	\$1,087	\$1,335	\$1,699	\$1,845	-	\$697
% Change										
2013-14	-9%	-10%	-3%	-11%	8%	7%	-7%	-5%	-	13%
Dec.										

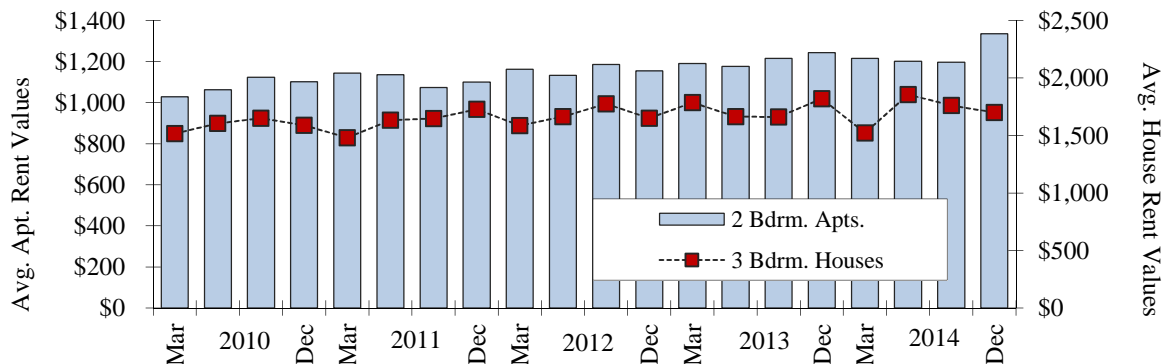
SOURCE: Community Research Center rental surveys, 2010-2014, including most major apartment complexes, *Fairbanks Daily News-Miner* advertisements, and <http://www.craigslist.com> during the week surrounding the 19th of March, June, September and December.

NOTE: Aging Fairview Manor demolished the last units in the fall 2011. Weeks Field Estates has replaced them with 130 affordable housing units in 2009-2011. Walden Estates, once off-base military housing, privatized and placed 150 units; 3-5 bdrms. on the market for sale or rent (27.duplexes; 23:4-plexes; 4:houses) in June 2010 (PHI). By September 2010 all units were under contract with none available for rent. B&B's come off in May & back on in September. See *Vacancy Rates* footer for military deployments.

^ Correction made to March 2011 data on June 24, 2011.

AVERAGE MONTHLY RENTS FOR AVAILABLE HOUSING UNITS

Fairbanks North Star Borough
2010-2014



Housing

RESIDENTIAL HOUSING SALES*

Fairbanks North Star Borough
2012-2014**

Quarter	1 Bedroom		2 Bedroom		3 Bedroom		4 Bedroom		5+ Bedroom		Total # Sold	Avg.Price
	#	Price	#	Price	#	Price	#	Price	#	Price		
2012												
1st Qtr.	8	\$107,000	23	\$156,582	81	\$220,186	25	\$293,744	7	\$307,957	144	\$220,776
2nd Qtr.	11	\$108,668	26	\$162,511	95	\$233,418	30	\$276,064	2	\$192,500	164	\$221,111
3rd Qtr.	15	\$125,533	41	\$156,251	110	\$231,445	52	\$271,592	9	\$261,110	227	\$221,238
4th Qtr.	10	\$86,600	18	\$152,544	57	\$221,887	19	\$234,584	6	\$285,133	110	\$203,884
2012 Total	44	\$109,099	108	\$157,211	343	\$227,744	126	\$271,471	24	\$275,062	645	\$218,143
2013												
1st Qtr.	12	\$116,741	22	\$179,311	88	\$222,038	30	\$277,129	6	\$286,066	158	\$220,983
2nd Qtr.	9	\$81,666	26	\$167,436	93	\$229,575	34	\$301,022	9	\$252,544	171	\$227,757
3rd Qtr.	14	\$118,369	45	\$152,495	145	\$231,950	51	\$299,159	17	\$297,294	272	\$229,644
4th Qtr.	9	\$114,611	22	\$137,713	73	\$201,386	23	\$270,673	10	\$248,432	137	\$200,527
2013 Total	44	\$109,649	115	\$158,175	399	\$223,618	138	\$290,081	42	\$274,467	738	\$221,947
2014												
1st Qtr.	10	\$89,520	15	\$144,251	68	\$189,023	24	\$256,482	8	\$241,243	125	\$191,984
2nd Qtr.	12	\$92,285	48	\$170,202	129	\$221,507	60	\$266,812	11	\$309,090	260	\$220,232
3rd Qtr.	15	\$85,053	51	\$163,222	146	\$224,622	64	\$285,853	11	\$354,118	287	\$225,034
4th Qtr.	11	\$131,159	26	\$145,239	122	\$214,885	59	\$255,171	16	\$326,931	234	\$221,030
2014 Total	48	\$98,358	140	\$160,243	465	\$215,997	207	\$268,183	46	\$314,264	906	\$218,062
% Chg. 4th Qtr. 2013-14	22%	14%	18%	5%	67%	7%	157%	-6%	60%	32%	71%	10%
% Chg. YTD 2013-14	9%	-10%	22%	1%	17%	-3%	50%	-8%	10%	14%	23%	-2%

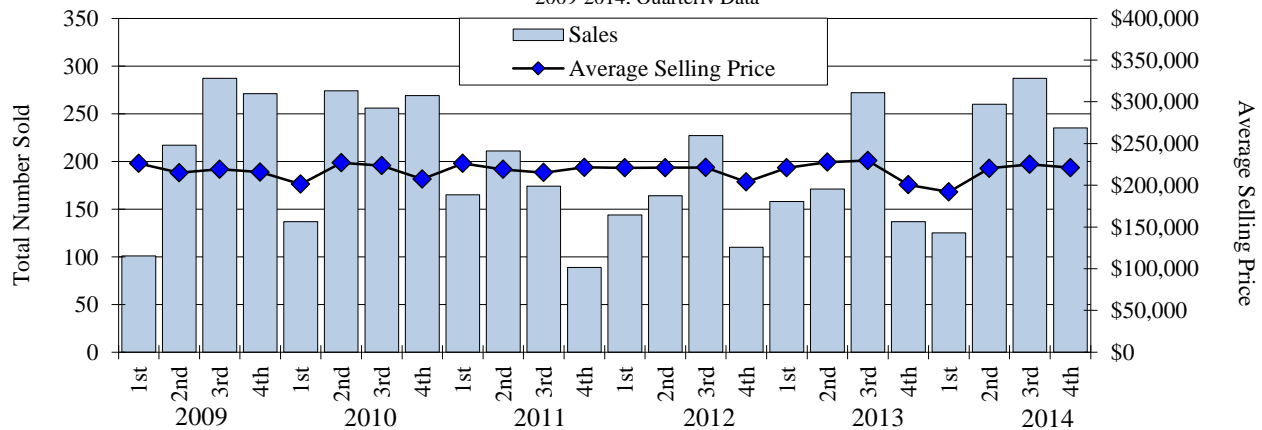
SOURCE: Greater Fairbanks Board of Realtors and Alaska/Multiple Listing Service, Inc., personal and computer printout communications 2012-2014. Fairbanks Area MLS District data maintained by the Board or its MLS may not reflect all real estate activity in the market, and neither the Board nor its MLS guarantees or is in any way responsible for accuracy of the data.

* Does not include houses without bedrooms or sales of housing with zero lot lines.

** The Year-End Total number of sales includes the calculated average price of sales.

RESIDENTIAL HOUSING SALES

Fairbanks North Star Borough
2009-2014. Quarterly Data



Housing

ANNUAL AVERAGE RESIDENTIAL HOUSING SALES*

Fairbanks North Star Borough
2000-2014

Year	1 Bedroom		2 Bedroom		3 Bedroom		4 Bedroom		5+ Bedroom		Total # Sold**	Avg. Selling Price	% Chg fr prev yr	
	#	Price	#	Price	#	Price	#	Price	#	Price			Total # Sold	Avg. Price
2000	59	\$53,824	180	\$92,473	396	\$140,714	140	\$173,130	41	\$187,028	816	\$131,679	11.3%	2.7%
2001	61	\$63,591	233	\$94,299	432	\$150,035	162	\$176,423	47	\$188,765	935	\$137,025	14.6%	4.1%
2002	43	\$68,595	175	\$100,499	295	\$158,241	130	\$213,208	50	\$201,706	693	\$151,545	-25.9%	10.6%
2003	59	\$74,127	204	\$107,667	410	\$170,379	173	\$204,159	47	\$237,134	893	\$159,751	28.9%	5.4%
2004	65	\$93,531	164	\$120,336	441	\$178,733	147	\$214,663	39	\$240,959	856	\$170,080	-4.1%	6.5%
2005	55	\$95,452	160	\$135,749	439	\$207,847	163	\$244,873	38	\$266,373	855	\$196,785	-0.1%	15.7%
2006	64	\$107,793	158	\$148,952	554	\$220,860	194	\$262,791	46	\$288,256	1016	\$213,613	18.8%	8.6%
2007	58	\$107,211	176	\$170,842	541	\$228,359	194	\$271,421	41	\$288,301	1010	\$222,084	-0.6%	4.0%
2008	59	\$107,872	135	\$155,583	493	\$218,826	159	\$277,801	19	\$306,389	865	\$214,151	-14.4%	-3.6%
2009	46	\$109,055	154	\$161,362	465	\$224,245	171	\$264,285	40	\$287,474	876	\$217,845	1.3%	1.7%
2010	59	\$115,540	139	\$147,941	493	\$223,043	198	\$266,623	47	\$269,378	936	\$216,659	6.8%	-0.5%
2011	26	\$109,868	104	\$165,225	332	\$222,347	142	\$265,592	35	\$281,853	639	\$221,939	-31.7%	2.4%
2012	44	\$109,099	108	\$157,211	343	\$227,744	126	\$271,471	24	\$275,062	645	\$218,143	0.9%	-1.7%
2013	44	\$109,647	115	\$158,175	399	\$223,618	138	\$290,081	42	\$274,467	738	\$221,947	14.4%	1.7%
2014	48	\$98,358	140	\$160,243	465	\$215,997	207	\$268,183	46	\$314,264	906	\$218,062	22.8%	-1.8%
Annual Average 2000-13	53	\$94,904	156	\$138,437	433	\$200,733	163	\$244,314	40	\$260,494	845	\$194,087		

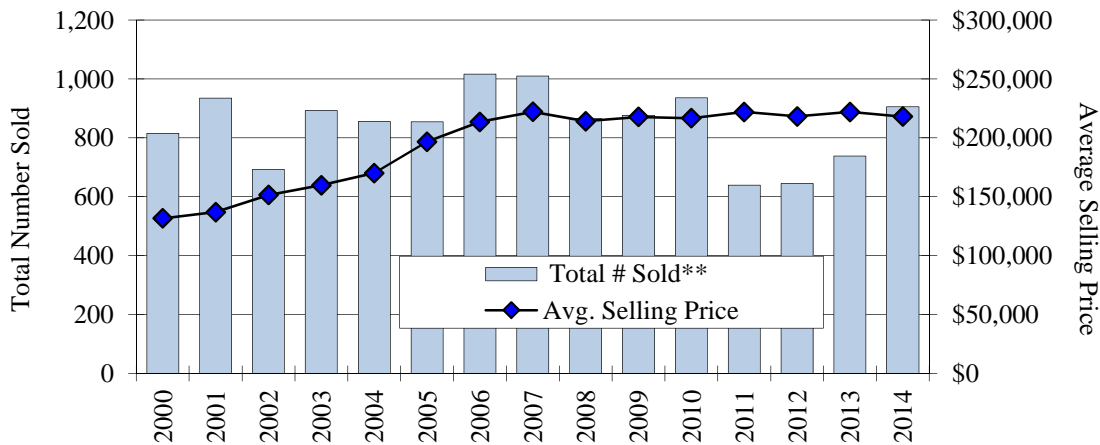
SOURCE: Greater Fairbanks Board of Realtors and Alaska/Multiple Listing Service, Inc., personal and computer printout communications 2000-2014. Fairbanks Area MLS District data maintained by the Board or its MLS may not reflect all real estate activity in the market, and neither the Board nor its MLS guarantees or is in any way responsible for accuracy of the data.

* Does not include houses without bedrooms or housing with zero lot lines.

** The Year-End Total number of sales includes the calculated average price of sales.

ANNUAL RESIDENTIAL HOUSING SALES*

Fairbanks North Star Borough
2000-2014



Housing

NEW STRUCTURES BY UNIT ANNUAL REPORT*

Fairbanks North Star Borough
2001-2014*

Year Built	City of Fairbanks	City of North Pole	Balance of Borough	New Construction (ALL)
2001	29	7	562	598
2002	50	6	593	649
2003	80	10	704	794
2004	65	50	858	973
2005	82	42	820	944
2006	83	39	779	901
2007	243	37	709	989
2008	154	11	372	537
2009	337	2	399	738
2010	95	11	423	529
2011	50	5	678	733
2012	37	5	338	380
2013	38	1	253	292
2014	15	2	233	250

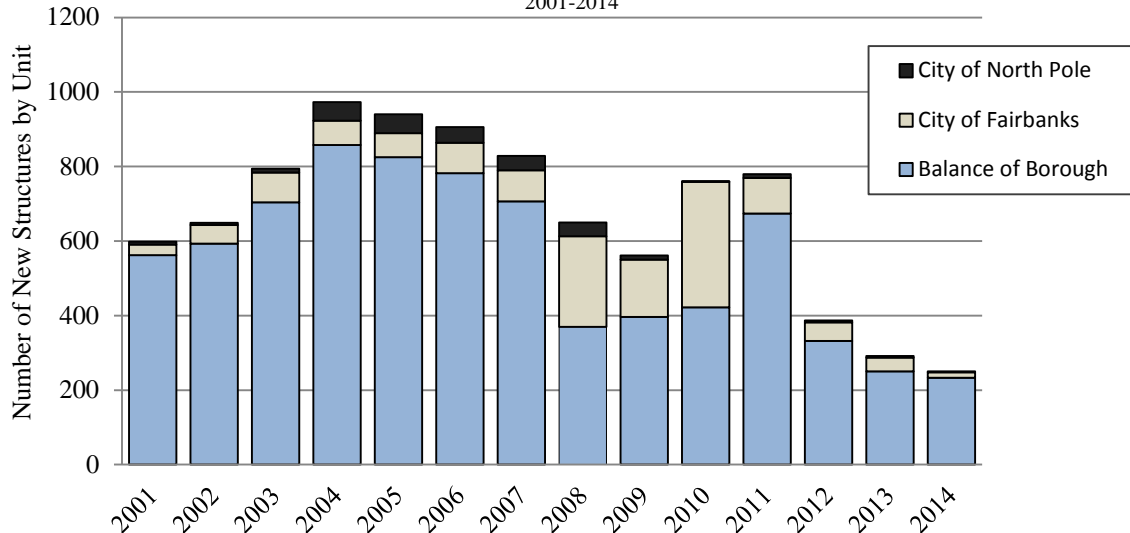
SOURCE: Fairbanks North Star Borough Assessing Department, personal communications, 2006-2014.

NOTE: Assessing figures are collected and updated daily but stabilize one quarter after calendar year close and prior to May certification date. The term Multi-family is indicative of structures having more than one residential unit, such as a duplex, triplex, 4-plex, etc. Structures with Mother-in-law apartments are not usually regarded as multi-family. Single Family Residential (SFR) abbreviated above. SFR includes condominiums, and townhouses. In some instances, cabins and mobile homes are viewed as SFR (however, cabins are not necessarily year-round residential units, and mobile homes are not always located on a lot with a foundation). The mobile home classification is typically considered transient stock (because they can easily be relocated). The *by Structure* count was replaced with a *"by unit"* count beginning February, 2010.

* Current data supersedes previous figures reported and current year is YTD (year to date) data.

NEW STRUCTURES BY UNIT

Fairbanks North Star Borough
2001-2014



COST OF LIVING

C2ER COST OF LIVING INDEX*

For Selected Cities
2014 Annual Average Data

City	Composite Index 100%	Grocery		Utilities 10.23%	Trans- portation 12.12%	Health Care 4.41%	Misc. Goods & Services 31.48%
		Items 13.96%	Housing 27.80%				
West:							
Fairbanks, AK	135.7	123.4	128.7	239.2	112.9	150.8	120.5
Anchorage, AK	128.5	123.4	157.8	97.0	105.1	139.9	122.4
Kodiak, AK	136.1	140.4	152.6	156.7	125.0	140.3	116.7
Juneau, AK	132.4	129.3	158.8	145.5	108.7	150.2	112.8
Phoenix, AZ	96.2	100.6	92.9	96.5	103.0	101.6	93.6
San Diego, CA	135.4	105.6	204.2	111.3	117.0	112.9	105.9
Denver, CO	107.5	98.5	124.4	97.7	101.5	103.8	102.5
Boise, ID	94.7	93.6	86.5	88.6	106.1	103.9	98.8
Bozeman, MT	100.8	102.0	113.2	88.0	92.5	105.9	96.1
Rio Rancho, NM	92.4	95.4	77.7	89.0	101.2	97.5	100.9
Seattle, WA	126.9	111.7	165.6	98.3	118.1	116.6	113.5
Pierre, SD	102.3	111.3	113.5	89.9	91.0	95.0	97.7
South:							
Miami, FL	111.4	108.6	125.6	97.7	111.2	103.4	105.6
Atlanta, GA	99.6	104.6	97.0	90.7	102.1	101.3	101.5
Lafayette, LA	95.9	94.5	94.0	92.7	100.9	86.8	98.7
Springfield, MO	90.4	96.4	73.3	101.9	93.7	98.6	96.6
Tulsa, OK	88.7	96.5	65.6	95.4	99.1	95.6	98.4
Memphis, TN	85.6	92.8	69.7	93.3	92.7	91.1	90.6
Dallas, TX	95.8	101.5	75.4	102.8	100.2	100.0	106.6
North Central:							
Indianapolis, IN	93.5	93.8	82.7	95.1	98.7	98.4	99.8
Grand Rapids, MI	92.3	95.3	77.9	94.5	101.7	92.0	99.3
Madison, WI	107.0	103.2	114.7	100.6	106.2	115.5	103.1
Northeast:							
New York, NY	222.6	135.2	439.5	136.6	125.3	112.4	150.8
Philadelphia, PA	119.5	114.3	135.4	121.8	106.6	98.7	114.8
Boston, MA	137.7	113.9	175.0	135.6	107.1	120.6	130.1
Raleigh, NC	93.3	101.9	77.8	101.2	100.4	103.6	96.4
Richmond, VA	99.4	100.5	88.7	107.7	96.7	104.2	105.9
Avg. of 281 Urban Areas	100.0	100.0	100.0	100.0	100.0	100.0	100.0

SOURCE: Council for Community and Economic Research (C2ER), *Cost of Living Index, Comparative Data for 281 Urban Areas*, 2014 Annual Average Data, January 2015.

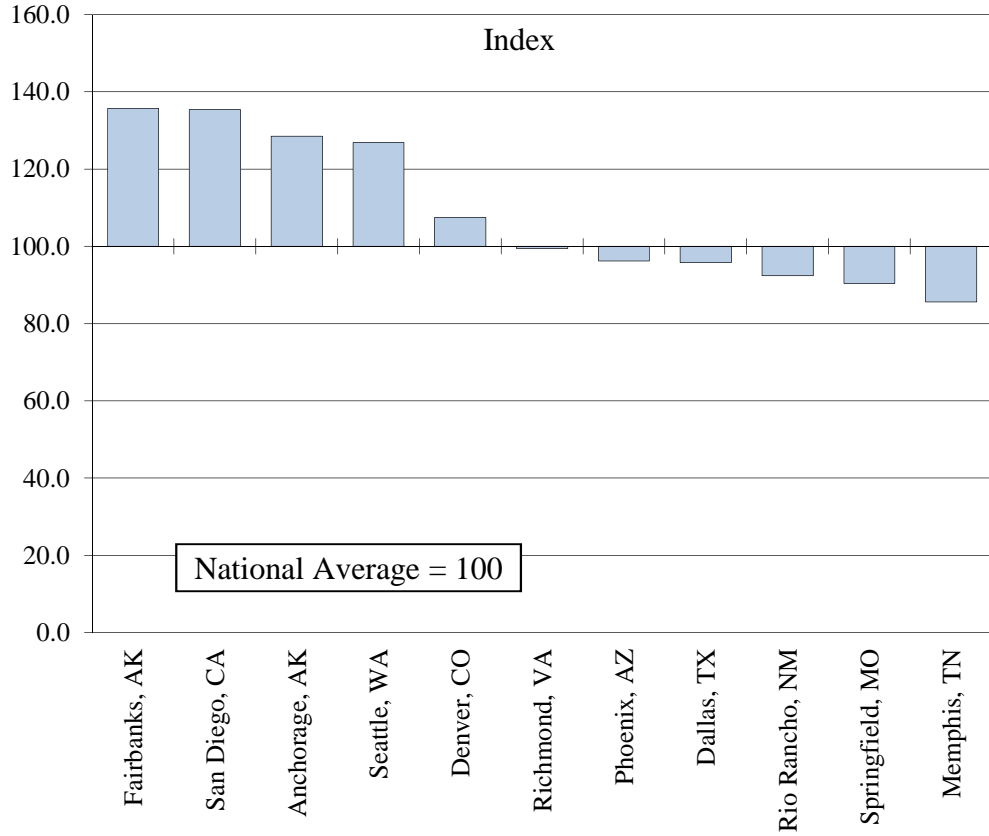
NOTE: This Cost of Living Index **does not measure inflation** (price change over time). Because each quarterly report is a separate comparison of prices at a single point in time, and because both the number and the mix of participants changes from one quarter to the next, **Index data from different quarters cannot be compared.** **The Index reflects cost differentials for professional and executive households in the top income quintile.** For inflation data contact the US Bureau of Labor Statistics (BLS) at www.bls.gov.

* Item percentages change so please watch for current percentages.

Cost of Living

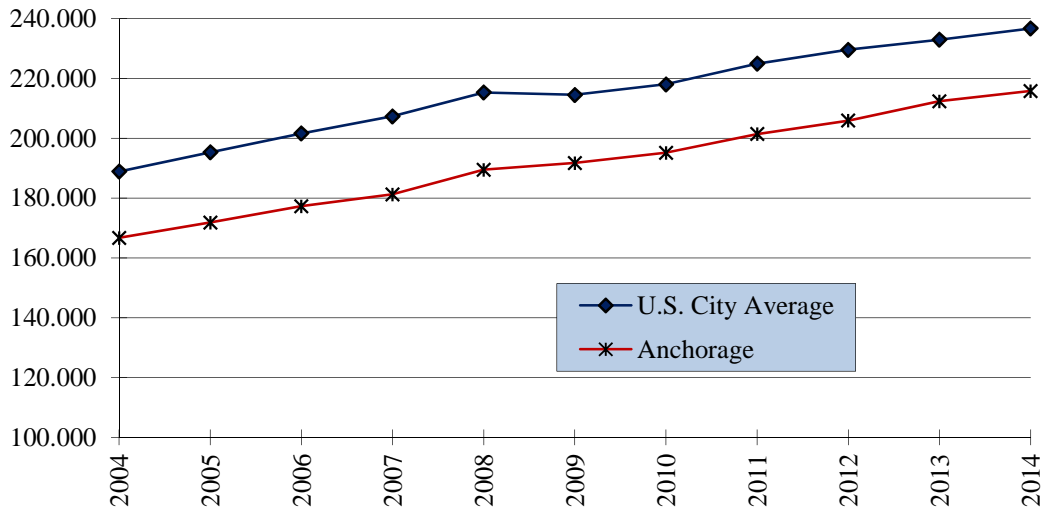
C2ER COST OF LIVING INDEX

For Selected Cities
Annual Average 2014



CONSUMER PRICE INDEX-U FOR ALL ITEMS

Anchorage & U.S. City Annual Average
2004-2014



Cost of Living

CONSUMER PRICE INDEX-U*^

Anchorage, Alaska
2009-2014

	2009	2010	2011	2012	2013	2014	% Change 2013-14
Jan. - June Average	190.032	194.834	200.278	205.215	210.853	214.777	1.9%
July - Dec. Average	193.456	195.455	202.576	206.617	213.910	216.833	1.4%
Annual Average	191.744	195.144	201.427	205.916	212.381	215.805	1.6%
% Change from Previous Year	1.2%	1.8%	3.2%	2.2%	3.1%	1.6%	

SOURCE: U.S. Department of Labor, Bureau of Labor Statistics, *Consumer Price Indexes Pacific Cities and U.S. City Average*, not seasonally adjusted, 2009-2014.

NOTE: 1982-1984 = 100

* For All Urban Consumers.

CONSUMER PRICE INDEX-U* FOR ALL ITEMS

U.S. City Average
2009-2014

	2009	2010	2011	2012	2013	2014	% Change 2013-14
January	211.143	216.687	220.223	226.665	230.280	233.916	1.6%
February	212.193	216.741	221.309	227.663	232.166	234.781	1.1%
March	212.709	217.631	223.467	229.392	232.773	236.293	1.5%
April	213.240	218.009	224.906	230.085	232.531	237.072	2.0%
May	213.856	218.178	225.964	229.815	232.945	237.900	2.1%
June	215.693	217.965	225.722	229.478	233.504	238.343	2.1%
July	215.351	218.011	225.922	229.104	233.596	238.250	2.0%
August	215.834	218.312	226.545	230.379	233.877	237.852	1.7%
September	215.969	218.439	226.889	231.407	234.149	238.031	1.7%
October	216.177	218.711	226.421	231.317	233.546	237.433	1.7%
November	216.330	218.803	226.230	230.221	233.069	236.151	1.3%
December	215.949	219.179	225.672	229.601	233.049	234.812	0.8%
Annual Average	214.537	218.056	224.939	229.594	232.957	236.736	1.6%
% Change from Previous Year	-0.4%	1.6%	3.2%	2.1%	1.5%	1.6%	

SOURCE: U.S. Department of Labor, Bureau of Labor Statistics, *Consumer Price Indexes Pacific Cities and U.S. City Average*, not seasonally adjusted, 2009-2014.

NOTE: 1982-1984=100; All items. 3rd Qtr. 2013 - federal government shutdown pushed back the release dates for data.

* For All Urban Consumers.

Cost of Living

COST OF FOOD AT HOME FOR A WEEK

Selected Alaskan Communities
September 2014

	Anchorage	Cordova	Delta	Fairbanks	Kenai	Matsu	Sitka
Family of 2	\$157.09	\$225.16	\$190.61	\$152.63	\$174.44	\$156.76	\$237.45
Family of 4	\$180.04	\$258.06	\$218.46	\$174.93	\$199.93	\$179.66	\$272.15
Individuals							
Children:							
1 years	\$26.18	\$37.53	\$31.77	\$25.44	\$29.07	\$26.13	\$39.58
2-3 years	\$28.57	\$40.95	\$34.67	\$27.76	\$31.73	\$28.51	\$43.19
4-5 years	\$30.37	\$43.52	\$36.85	\$29.50	\$33.72	\$30.30	\$45.90
6-8 years	\$38.61	\$55.35	\$46.85	\$37.52	\$42.88	\$38.53	\$58.37
9-11 years	\$43.40	\$62.20	\$52.66	\$42.16	\$48.19	\$43.30	\$65.60
Males:							
12-13 years	\$46.74	\$67.00	\$56.72	\$45.42	\$51.91	\$46.64	\$70.66
14-18 years	\$48.18	\$69.06	\$58.46	\$48.61	\$53.50	\$48.08	\$72.83
19-50 years	\$51.88	\$74.37	\$62.96	\$50.41	\$57.62	\$51.77	\$78.43
51-70 years	\$47.34	\$67.86	\$57.44	\$46.00	\$52.57	\$47.24	\$71.56
71+ years	\$47.70	\$68.37	\$57.88	\$46.35	\$52.97	\$47.60	\$72.10
Females:							
12-13 years	\$46.74	\$67.00	\$56.72	\$45.42	\$51.91	\$46.64	\$70.66
14-18 years	\$45.91	\$65.80	\$55.70	\$44.60	\$50.98	\$45.81	\$69.39
19-50 years	\$46.15	\$65.14	\$55.99	\$44.84	\$51.24	\$46.05	\$69.75
51-70 years	\$45.55	\$65.29	\$55.27	\$44.26	\$50.58	\$45.45	\$68.65
71+ years	\$44.11	\$63.23	\$53.53	\$42.86	\$48.99	\$44.02	\$66.68

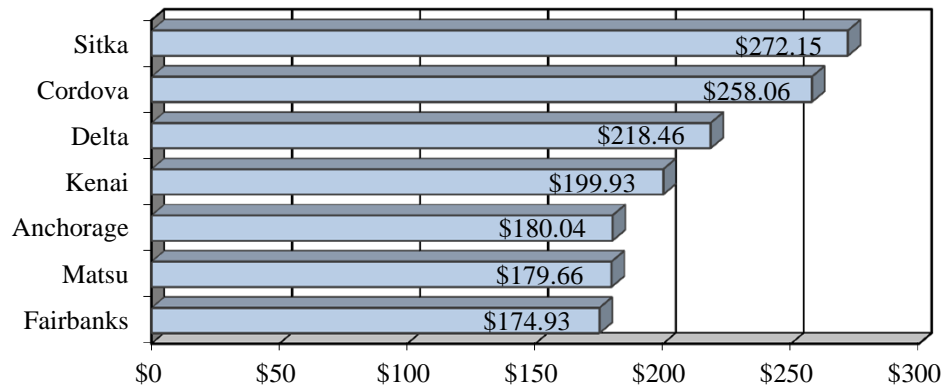
SOURCE: Alaska Cooperative Extension Service, UAF, "Cost of Food at Home for a Week," September 2014.

NOTE: There will be a 6 month lag in this report due to press timelines.

COST OF FOOD AT HOME FOR A WEEK

FAMILY OF 4

Selected Alaskan Communities
September 2014



Cost of Living

AVERAGE SELF-SERVICE UNLEADED GASOLINE PRICES*

Fairbanks North Star Borough
2009-2014

	2009	2010	2011	2012	2013	2014	% chg 2013-14
January	\$2.539	\$3.279	\$3.629	\$3.919	\$3.779	\$3.649	-3.4%
February	\$2.599	\$3.349	\$3.699	\$3.999	\$3.939	\$3.679	-6.6%
March	\$2.559	\$3.349	\$3.919	\$4.309	\$4.179	\$3.799	-9.1%
April	\$2.559	\$3.499	\$4.109	\$4.449	\$4.169	\$3.919	-6.0%
May	\$2.679	\$3.499	\$4.229	\$4.579	\$4.169	\$3.999	-4.1%
June	\$2.859	\$3.499	\$4.179	\$4.369	\$4.189	\$4.179	-0.2%
July	\$3.159	\$3.529	\$4.039	\$4.049	\$4.159	\$4.299	3.4%
August	\$3.299	\$3.529	\$3.919	\$3.989	\$4.069	\$4.229	3.9%
September	\$3.349	\$3.529	\$3.919	\$4.069	\$3.999	\$4.079	2.0%
October	\$3.479	\$3.529	\$4.019	\$4.209	\$3.889	\$3.919	0.8%
November	\$3.369	\$3.559	\$4.059	\$4.019	\$3.769	\$3.739	-0.8%
December	\$3.329	\$3.559	\$3.979	\$3.829	\$3.719	\$3.429	-7.8%
Annual Average	\$2.982	\$3.476	\$3.975	\$4.149	\$4.002	\$3.910	-2.3%

SOURCE: Community Research Center gasoline price survey and personal communications with Totem Chevron on Gaffney Road in Fairbanks, Alaska, 2009-2014.

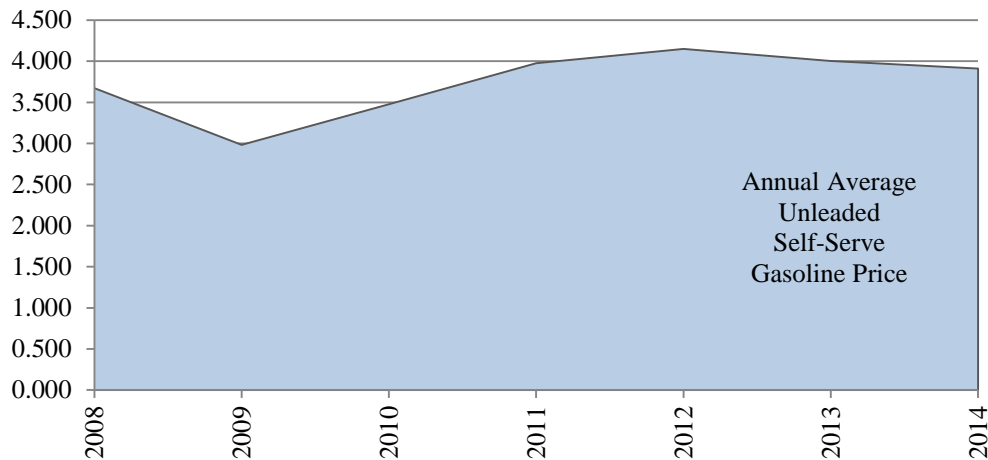
NOTE: Figures reflect prices at the self-serve pump for unleaded gasoline. Price is a monthly average of full months business. Only national gasoline retail chain outlets are surveyed.

Factors that may influence the price fluctuations include seasonality in the demand for gasoline, changes in the cost of crude oil, product supply/demand imbalances, proximity of supply, supply disruptions, competition in the local market, environmental programs, operating costs, and World oil supply/demand. Recent examples include the natural disaster named Hurricane Katrina (August 2005) which took out 25% of the US Crude oil production and 15% of the US refinery capacity. Some major pipelines were impacted by either shutdowns or reduced operating rates. The Deep Water Horizon Oil Spill in the Gulf of Mexico (April 2010). Other factors are political unrest such as the riots in the Middle East including Egypt, and Libya (January-April 2011). It is known that retail prices are likely to remain elevated as long as some refineries remain shut down and the U.S. gasoline market continues to stretch supplies to their limit.

* Beginning December 2010 this survey changed to monthly reporting.

ANNUAL AVERAGE SELF-SERVICE UNLEADED GASOLINE PRICES

Fairbanks North Star Borough
2008-2014



POPULATION & SOCIAL CONDITIONS

POPULATION COUNTS & ESTIMATES** Fairbanks, North Pole and the Fairbanks North Star Borough 2004-2014, Selected Years

			U.S. Census Bureau (1)	Ak. Department of Labor (2)*	Ak. Dept of Commerce (3)
F A I R B A N K S	2004	*	30,839	30,402	30,402
	2005	*	30,946	31,478	31,478
	2006	*	30,636	30,580	30,580
	2007	*	31,184	32,266	32,266
	2008	*	31,212	31,694	31,694
	2009	*	31,083	32,346	32,346
	2010	^	31,535	31,535	31,535
	2011	^	32,012	30,599	30,621
	2012	^	32,254	32,007	32,033
	2013	^	32,324	32,185	32,204
	2014	^	NA	31,721	31,721
N O R T H P O L E	2004	*	1,796	1,548	1,548
	2005	*	1,848	1,624	1,624
	2006	*	1,873	1,675	1,675
	2007	*	1,967	2,013	2,013
	2008	*	2,008	2,233	2,233
	2009	*	2,045	2,199	2,199
	2010	^	2,117	2,117	2,117
	2011	^	2,172	2,102	2,104
	2012	^	2,205	2,156	2,158
	2013	^	2,214	2,206	2,209
	2014	^	NA	2,198	2,198
F N S B	2004	*	89,043	87,555	87,608
	2005	*	90,431	90,381	96,888
	2006	*	90,545	90,953	96,888
	2007	*	93,545	95,354	97,970
	2008	*	94,552	96,423	98,660
	2009	*	95,238	96,631	97,581
	2010	^	98,190	97,581	97,581
	2011	^	99,276	97,828	97,909
	2012	^	100,141	100,243	100,320
	2013	^	100,436	99,549	99,632
	2014	^	NA	97,972	97,972

SOURCE: (1) U.S. Census Bureau, Population Division, July 1st estimates. 2013 Population Estimates. PEPANNRES Table: *Annual Estimates of the Resident Population for Counties of Alaska: April 1, 2010 to July 1, 2013*, also Table: *Annual Estimates of the Resident Population in Alaska: now known as *Intercensal Estimates of the Resident Population for Incorporated Places and Minor Civil Divisions: April 1, 2000 to July 1, 2013*, May 2014. Geographic change notes defined at: <http://www.census.gov>.

(2) Alaska Department of Labor and Workforce Development, Research and Analysis Section; and US Census Bureau. *Alaska Population Estimates by Borough, Census Area, City and Census Designated Place (CDP), 2010-2014*, Vintage 2014 ^, and *Alaska Population Estimates by Borough, Census Area, City and Census Designated Place (CDP), 2010-2014*, Vintage 2014 ^. All numbers are based on 2010 Census geography. ADOL website: <http://laborstats.alaska.gov>, February 2015.

(3) Alaska Department of Commerce, Community and Economic Development (DCCED), Division of Community and Regional Affairs, 2014 Commissioner Certified Estimates, January 15, 2014. DCCED Certified numbers may vary from ADOL population estimates as a result of the Population Estimate Appeal process available to incorporated communities on a yearly basis, as well as annual revisions by ADOL. Once certified, DCCED numbers may be applied for two consecutive calendar years. DCCED website: http://www.commerce.state.ak.us/dca/commdb/CF_COMDB.htm.

NOTE: The FNSB numbers include population for all communities within the Borough plus Fort Wainwright Army Base and Eielson Air Force Base.

** U.S. Census and ADOL estimated numbers may be revised annually.

NA Data not available. Data will be released May, 2015.

Population and Social Conditions

MILITARY POPULATION

Ft. Wainwright Army Base*

By Federal Fiscal Year Quarter: 2011-14

Ft. Wainwright Army Base	FFY Qtr.	FFY Months	Military Active Duty Personnel	Military Families	Total	% Change from previous quarter
2011	1	Oct-Dec	6,996	8,517	15,513	5.1%
	2	Jan-Mar	7,358	8,858	16,216	-1.7%
	3	Apr-Jun	7,549	9,097	16,646	2.7%
	4	Jul-Sept	7,736	9,097	16,833	1.1%
2012	1	Oct-Dec	7,453	9,097	16,550	-1.7%
	2	Jan-Mar	7,278	9,009	16,287	-1.6%
	3	Apr-Jun	6,379	10,152	16,531	1.5%
	4	Jul-Sept	6,441	9,998	16,439	-0.6%
2013	1	Oct-Dec	6,132	9,157	15,289	-7.0%
	2	Jan-Mar	6,164	8,863	15,027	-1.7%
	3	Apr-Jun	6,568	9,082	15,650	4.1%
	4	Jul-Sept	6,475	9,038	15,513	-0.9%
2014	1	Oct-Dec	6,142	8,628	14,770	-4.8%
	2	Jan-Mar	5,895	8,299	14,194	-3.9%
	3	Apr-Jun	5,905	8,354	14,259	0.5%
	4	Jul-Sept	5,880	8,369	14,249	-0.1%

SOURCE: Fort Wainwright Army Base (FWA), Plans, Analysis and Integration Office (PAIO), and ALCOM, Alaskan Command, 2011-2014.

NOTE: Using Federal Fiscal Year (FFY) reporting periods: FFY1Q: Oct-Dec; FFY2Q: Jan-Mar; FFY3Q: Apr-Jun; FFY4Q: Jul-Sept. 4th Qtr. 2014 - data was not available at time of publication.

* Does not include contract civilian positions or BLM.

MILITARY POPULATION

Eielson Air Force Base*

By Federal Fiscal Year Quarter: 2011-2014

Eielson Air Force Base	FFY Qtr.	FFY Months	Military Active Duty Personnel	Military Families	Total	% Change from previous quarter
2011	1	Oct-Dec	1,909	2,974	4,883	1.4%
	2	Jan-Mar	1,912	2,998	4,910	0.6%
	3	Apr-Jun	1,914	3,022	4,936	0.5%
	4	Jul-Sept	1,887	2,954	4,841	-1.9%
2012	1	Oct-Dec	1,893	2,953	4,846	0.1%
	2	Jan-Mar	1,893	2,953	4,846	0.0%
	3	Apr-Jun	1,918	2,939	4,857	0.2%
	4	Jul-Sept	1,931	2,866	4,797	-1.2%
2013	1	Oct-Dec	1,900	2,846	4,746	-1.1%
	2	Jan-Mar	1,873	2,832	4,705	-0.9%
	3	Apr-Jun	1,883	2,900	4,783	1.7%
	4	Jul-Sept	1,866	2,840	4,706	-1.6%
2014	1	Oct-Dec	1,862	2,815	4,677	-0.6%
	2	Jan-Mar	1,876	2,799	4,675	0.0%
	3	Apr-Jun	1,874	2,830	4,704	0.6%
	4	Jul-Sept	1,825	2,670	4,495	-4.4%

SOURCE: ALCOM, Alaskan Command, 2011-2014.

NOTE: Using Federal Fiscal Year (FFY) reporting periods: FFY1Q: Oct-Dec; FFY2Q: Jan-Mar; FFY3Q: Apr-Jun; FFY4Q: Jul-Sept. 4th Qtr. 2014 - data was not available at time of publication

* Does not include contract civilian positions or BLM.

Population and Social Conditions

VITAL STATISTICS[^] Fairbanks North Star Borough 1993-2013

Year	Births	Deaths	Marriages	Divorces*	Adoptions
1993	1,631	311	885	693	110
1994	1,536	304	901	638	87
1995	1,490	291	856	593	107
1996	1,462	298	804	556	84
1997	1,424	310	778	600	103
1998	1,439	290	735	677	88
1999	1,415	335	817	593	118
2000	1,537	329	806	475	114
2001	1,488	367	806	558	104
2002	1,515	283	831	541	109
2003	1,564	355	779	525	88
2004	1,591	388	854	531	76
2005	1,557	338	897	559	63
2006	1,568	363	805	475	75
2007	1,725	387	1123	622	59
2008	1,881	362	995	614	92
2009	1,557	421	800	614	74
2010	1,764	393	992	735	60
2011	1,679	424	878	718	64
2012	1,449	456	940	670	55
2013	1,708	447	924	454	72
% Chg. 2012-13	18%	-2%	-2%	-32%	31%

SOURCE: Alaska Department of Health and Social Services, Division of Public Health, Vital Statistics Section, Annual Reports 1993-2003, and personal communications, 1993-2015.

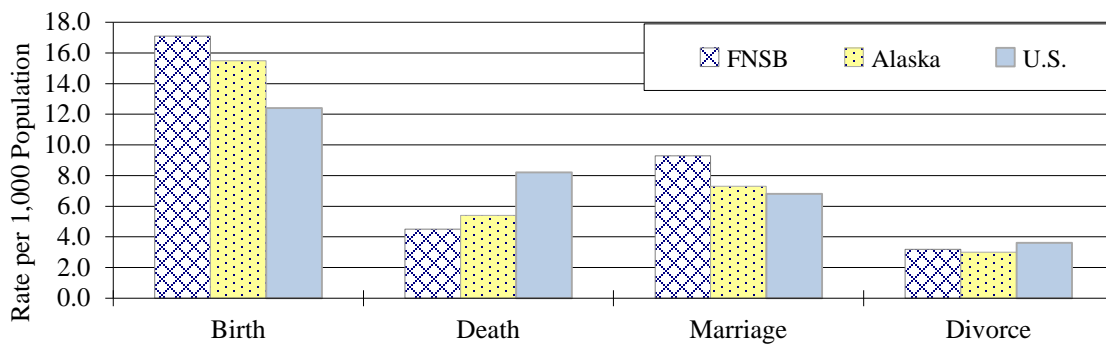
NOTE: Births & deaths are counted by place of residence. Marriages & adoptions are counted by place of occurrence of the event, and Divorces are for the 4th Judicial District. Beginning in 2010, data for adoptions occurring in the Fairbanks North Star Borough were no longer available. The adoption data from 2010 to today are calculated by residence of the adopting mother.

* Includes dissolutions & annulments for the 4th Judicial District.

[^] Current data supersedes previously report figures.

BIRTH, DEATH, MARRIAGE & DIVORCE RATES

FNSB, Alaska & the United States
2013



Population and Social Conditions

BIRTH, DEATH, MARRIAGE & DIVORCE RATES[^]

Fairbanks North Star Borough, Alaska & the United States
2004-2013

	Year	Births	Deaths	Marriages	Divorces*
F N S B	2004	18.2	4.4	9.8	4.2
	2005	17.2	3.7	9.9	4.3
	2006	17.2	4.0	8.9	3.7
	2007	18.1	4.1	11.8	4.7
	2008	19.5	3.8	10.3	4.6
	2009	16.1	4.4	8.3	4.6
	2010	18.1	4.0	10.2	5.4
	2011	17.2	4.3	9.0	5.2
	2012	14.4	4.5	9.4	4.7
	2013	17.1	4.5	9.2	3.2
A L A S K A	2004	15.7	4.6	8.5	4.5
	2005	15.7	4.7	8.2	4.4
	2006	16.3	5.0	8.2	4.3
	2007	16.2	5.1	8.6	4.5
	2008	16.6	5.1	8.4	4.6
	2009	16.2	5.2	7.8	4.6
	2010	16.1	5.3	8.0	4.8
	2011	15.8	5.3	7.8	4.8
	2012	14.4	5.3	7.3	4.6
	2013	15.5	5.4	7.8	3.0
U S A	2004	14.0	8.3	7.7	3.9
	2005	14.0	8.1	7.8	3.8
	2006	14.3	8.1	7.4	3.7
	2007	14.3	8.0	7.3	3.6
	2008	14.0	8.0	7.1	3.5
	2009	13.5	7.9	6.8	3.4
	2010	13.0	7.9	6.8	3.6
	2011	12.7	8.1	6.8	3.6
	2012	12.6	8.1	6.8	3.4
	2013	12.4	8.2	6.8	3.6

SOURCE: Alaska Dept. of Health and Social Services, Division of Public Health, Vital Statistics Section, Alaska Vital Statistics, personal communications, 2004-2013. U.S. Dept. of Commerce, Bureau of Census, Statistical Abstract of the United States 2004-2006. National Center for Health Statistics: www.cdc.gov/nchs, 2014.

NOTE: Rates are the number per 1,000 population. Births and deaths are counted by place of residence. Marriages, divorces and adoptions are counted by the place of occurrence of the event. 2011 data not available at press time.

* Includes dissolution's and annulments. The data listed for the FNSB are for the Alaskan 4th Judicial District.

[^] Preliminary figures and may be subject to revision.

Population and Social Conditions

COLLEGE DEGREES AWARDED*

University of Alaska Fairbanks
1994-95 to 2013-14

Academic Year	Occupational Endorsements	Certificates	Associate's	Bachelor's	Teacher Licensure	Master's	Doctorate	Total
1995-96	-	74	130	512	-	184	28	928
1996-97	-	90	136	586	-	182	20	1,014
1997-98	-	123	179	552	-	167	34	1,055
1998-99	-	77	196	497	-	117	27	914
1999-00	-	115	190	445	-	169	20	939
2000-01	-	104	216	448	-	125	27	920
2001-02	-	98	243	431	-	142	19	933
2002-03	-	78	246	395	-	163	36	918
2003-04	-	117	240	411	-	183	20	971
2004-05	-	91	223	432	-	236	25	1,007
2005-06	-	124	237	483	34	183	21	1,082
2006-07	-	169	210	464	34	199	33	1,109
2007-08	-	190	238	444	30	199	29	1,130
2008-09	26	109	193	483	30	169	37	1,047
2009-10	66	165	204	473	34	219	45	1,206
2010-11	54	98	233	523	35	199	46	1,188
2011-12	59	179	226	535	30	245	50	1,324
2012-13	80	162	283	550	37	213	52	1,377
2013-14	126	204	333	579	44	223	49	1,558
% Change '12-13 to '13-14	58%	26%	18%	5%	19%	5%	-6%	13%

SOURCE: University of Alaska Fairbanks, Office of Planning, Analysis and Institutional Research, Fairbanks, Alaska, personal communications, 1995-2014.

NOTE: The academic year runs from summer through spring. Beginning FY08 the UAF awards occupational endorsements, which is a non-degree award similar to a certificate, but requiring fewer credits to complete. UAF also recognizes its students who have earned the university's recommendation for teacher licensure.

* Current data supersedes previous figures reported.

OPENING FALL SEMESTER HEADCOUNTS FOR CREDIT ENROLLMENT*

University of Alaska - Fairbanks and Alaska
2008-2014

Fall Semester	2008	2009	2010	2011	2012	2013	2014	% chg 2013-14
Fairbanks Campus	4,976	5,271	5,504	5,665	5,369	6,279	6,229	-0.8%
UAF System	8,579	9,137	9,855	9,818	9,314	9,256	8,700	-6.0%
UA System	28,211	29,447	30,998	31,301	29,866	29,510	28,388	-3.8%

SOURCE: University of Alaska Fairbanks, Office of Planning, Analysis and Institutional Research, personal communications, 2008-2014.

NOTE: Opening headcounts are taken near the end of the second week of classes. Because most campuses offer credit courses beginning after this period, opening counts are generally lower than closing counts taken at the end of the semester.

* Current data supersedes previous figures reported.

Population and Social Conditions

FALL PUBLIC SCHOOL ENROLLMENTS

Fairbanks North Star Borough
2008-2014

School	2008	2009	2010	2011	2012	2013	2014	% Chg 2013-14
In-Town Enrollments								
Alternative Schools	106	113	110	116	137	131	129	-1.5%
Anne Wien Elem.	432	398	372	386	401	412	401	-2.7%
Badger Road Elem.	564	549	593	515	505	497	490	-1.4%
Barnette Magnet	393	404	409	404	412	415	420	1.2%
Chinook Charter Elem.	153	153	152	156	153	150	149	-0.7%
Denali Elem.	394	370	376	366	398	402	400	-0.5%
Effie Kokrine Charter	141	155	153	153	152	167	169	1.2%
Fairbanks Youth Facility	20	14	17	20	17	10	9	-10.0%
Hunter Elem.	320	352	388	392	353	353	344	-2.5%
Hutchison High	362	358	363	362	372	362	363	0.3%
Joy Elem.	369	384	379	424	444	464	441	-5.0%
Lathrop High	1,185	1,199	1,125	1,184	1,101	1,073	1,079	0.6%
Nordale Elem.	397	334	343	343	360	317	310	-2.2%
North Pole Elem.	533	532	483	413	453	459	446	-2.8%
North Pole Middle	599	634	585	652	679	656	657	0.2%
North Pole Sr. High	823	814	781	721	730	753	751	-0.3%
Pearl Creek Elem.	406	444	480	484	470	478	470	-1.7%
Randy Smith Middle	366	335	293	313	326	338	338	0.0%
Ryan Middle School	361	375	389	396	394	385	383	-0.5%
Salcha Elem.	98	101	88	83	84	75	75	0.0%
Star of the North Charter	201	201	194	196	196	194	188	-3.1%
Tanana Middle	503	523	514	501	513	472	474	0.4%
Ticasak Brown Elem.	517	553	548	511	545	514	508	-1.2%
Two Rivers Elem.	99	92	92	88	87	98	98	0.0%
University Park Elem.	490	460	473	526	529	503	503	0.0%
WaterShed Charter	--	173	188	195	196	202	202	0.0%
Weller Elem.	502	519	541	541	484	477	471	-1.3%
West Valley High	1,095	1,081	1,071	1,035	1,019	966	971	0.5%
Woodriver Elem.	441	413	446	436	445	438	436	-0.5%
Subtotal	11,870	12,033	11,946	11,912	11,955	11,761	11,675	-0.7%
On-Base Enrollments								
Anderson Elem.	310	328	329	283	269	253	246	-2.8%
Arctic Light Elem.	533	524	476	570	569	530	521	-1.7%
Ben Eielson Jr/Sr High	513	474	473	437	403	399	398	-0.3%
Crawford Elem.	281	306	292	296	300	298	298	0.0%
Ladd Elem.	381	542	499	495	499	540	526	-2.6%
Subtotal	2,018	2,174	2,069	2,081	2,040	2,020	1,989	-1.5%
BEST Correspondence	284	252	195	211	274	269	268	-0.4%
Total	14,172	14,459	14,210	14,204	14,269	14,050	13,932	-0.8%

SOURCE: FNSB School District, Attendance Office, "FTE October 20-school-Day ADM Count.", personal communications 2008-2014.

NOTE: Watershed Charter opened in 2009. BEST Correspondence aka Correspondence Study changed names in 2010.

Population and Social Conditions

PRIVATE SCHOOL ENROLLMENTS[^]

Fairbanks North Star Borough
2008-2014

Private School	Grade Range	2008	2009	2010	2011	2012	2013	2014
Bright Beginnings Learning Ctr	Pre-K	80	76	76	70	85	72	81
Fairbanks Montessori	Pre-K	97	101	96	90	101	95	97
Fairhill Community Christian	Pre-12*	146	162	163	93	96	80	104
Far North Christian	Pre-12*	70	64	45	51	58	55	53
Golden Heart Christian	Pre-12*	24	39	32	32	19	18	13
Hamilton Acres Baptist	Pre-8*	80	65	57	65	41	49	50
Immaculate Conception	Pre-6**	266	270	266	282	245	238	234
Monroe Jr./Sr. High School	7-12**	212	217	204	202	186	186	184
North Pole Christian	Pre-12	83	87	95	104	104	119	131
Total		1,058	1,081	1,034	989	935	912	947

SOURCE: Community Research Center Survey, 2008-2014.

NOTE: Bright Beginnings and Montessori schools added to survey January 2007.

* In 2007-2008 school year the school(s) expanded their classrooms structures to include Pre-school and extend to 12th grade.

** In 2007, Immaculate Conception (IC) includes Pre-6 and Monroe 7-12.

[^] Current data supersedes previous figures.

ALASKA STATEWIDE CORRESPONDENCE SCHOOLS*

Fairbanks North Star Borough
2008-2014

Correspondence School	Grade Range	2008	2009	2010	2011	2012	2013	2014
Alaska Gateway REACH Acad.	K-12	--	--	--	--	--	1	2
Alaska Virtual Acad.-Wrangell	K-8	--	--	--	9	0	12	10
Chugach Extension Correspondence	P-12	79	68	48	79	80	97	87
CyberLynx Program	P-12	125	129	157	136	156	138	153
Delta Cyber Charter School	K-12	36	11	1	0	--	--	--
Denali PEAK Program	K-12	4	1	2	0	2	5	2
Interior Distance Education of AK	P-12	728	765	727	759	742	748	696
Iditarod Distance Learning	K-12	--	--	--	--	--	10	22
PACE -Craig City	K-12	4	15	12	9	3	2	3
Raven School	K-12	267	250	225	224	271	270	274
Total		1,243	1,238	1,173	1,216	1,254	1,283	1,249

SOURCE: Alaska Department of Education & Early Development, Foundation Program Administrator, "Alaska Statewide Correspondence School Enrollments, FNSB School District, Attendance Office, "FTE October 20-school-Day ADM Count or ^October Count Period-Head Count (when ADM not available)", Juneau, Alaska, personal communication, 2008-2014.

NOTE: The addition of the statewide correspondence school (SCS) enrollment will provide a clearer picture of students in the FNSB, albeit, they are living here and attending SCS. Full Time Equivalent (FTE) numbers have been rounded to the nearest whole number.

-- School has closed.

* Current data supersedes previous figures.

Population and Social Conditions

ALCOHOLIC BEVERAGES DISTRIBUTED OR SOLD *

Fourth Judicial District
2008-2013

Month	2008	2009	2010	2011	2012	2013
LIQUOR						
January	28,029	29,146	22,113	18,057	21,085	19,998
February	13,238	10,341	14,743	5,779	14,405	14,852
March	8,107	14,549	15,382	7,034	16,336	15,794
April	14,353	17,578	18,468	46,246	18,709	19,335
May	17,214	7,510	19,123	18,161	19,283	17,540
June	18,239	30,839	20,151	22,982	23,116	22,585
July	24,440	22,425	22,228	23,456	22,560	21,839
August	16,560	22,512	21,560	20,475	19,393	21,385
September	26,454	22,153	20,818	21,895	23,530	23,305
October	9,138	20,292	11,890	21,946	20,111	19,114
November	15,163	19,743	10,617	18,012	18,766	20,171
December	12,604	18,263	26,576	19,048	18,566	18,573
TOTAL	203,539	235,351	223,669	243,091	235,860	234,491
WINE						
January	41,276	46,418	27,391	29,416	28,410	27,239
February	16,947	11,530	18,336	10,636	19,742	21,284
March	15,998	20,317	19,700	13,362	25,082	28,304
April	21,480	29,074	23,300	48,699	23,575	23,598
May	20,228	11,905	24,652	23,330	21,781	22,146
June	22,834	37,350	21,488	27,457	29,341	31,152
July	31,027	32,111	34,013	31,773	28,257	26,492
August	27,747	26,542	27,344	28,295	28,403	28,539
September	37,648	24,796	25,595	28,997	30,125	28,455
October	14,979	24,802	10,257	24,873	27,272	22,242
November	17,311	25,696	10,037	23,704	22,612	26,850
December	15,854	21,348	40,945	28,878	27,664	32,923
TOTAL	283,329	311,889	283,058	319,420	312,264	319,224
BEER**						
January	295,460	351,042	195,082	176,442	162,504	84,043
February	153,994	90,925	137,537	126,644	129,229	140,870
March	108,834	135,297	147,958	116,518	147,163	133,662
April	155,462	194,245	173,684	248,358	158,181	153,189
May	182,071	87,574	204,881	174,511	169,075	163,514
June	233,579	338,872	227,098	233,997	248,067	241,805
July	246,353	257,032	267,300	260,080	231,054	238,211
August	235,773	275,503	255,965	230,576	235,787	247,744
September	271,041	214,545	235,608	236,685	247,469	240,894
October	113,958	235,254	241,996	221,790	190,495	172,101
November	114,949	181,587	170,115	143,507	175,606	182,026
December	94,363	170,543	158,405	162,318	225,345	154,824
TOTAL	2,205,837	2,532,419	2,415,629	2,331,426	2,319,975	2,152,883

SOURCE: Alaska Department of Revenue, *Report of Alcoholic Beverages Distributed or Sold*, 2008-2013. The 4th Judicial District includes Fairbanks, Bethel, Delta Jct., Ft. Yukon, Galena, Healy, Nenana, Rampart, Tanana & Tok.

* Beginning in 2003, qualifying beer includes the category malt beverage in its total. All gallons rounded to

Population and Social Conditions

ANNUAL ALCOHOLIC BEVERAGES DISTRIBUTED OR SOLD

Fourth Judicial District
1977-2013

Year	-----IN GALLONS-----			Total Gallons	% Change fr/prev Yr.
	Liquor	Wine	Beer		
1977	228,820	170,305	2,018,415	2,417,540	*
1978	200,688	161,508	1,839,315	2,201,511	-8.9%
1979	181,514	151,855	1,808,381	2,141,750	-2.7%
1980	202,099	165,259	1,987,710	2,355,068	10.0%
1981	224,084	187,968	2,178,041	2,590,093	10.0%
1982	238,162	192,634	2,225,209	2,656,005	2.5%
1983	238,056	206,550	2,437,909	2,882,515	8.5%
1984	224,666	228,067	2,414,750	2,867,483	-0.5%
1985	211,861	222,148	2,385,227	2,819,236	-1.7%
1986	166,064	198,852	2,187,939	2,552,855	-9.4%
1987	165,766	195,227	2,157,696	2,518,689	-1.3%
1988	156,158	169,387	2,060,926	2,386,471	-5.2%
1989	153,093	158,816	1,843,109	2,155,018	-9.7%
1990	157,740	168,780	2,040,133	2,366,653	9.8%
1991	160,334	160,079	2,072,898	2,393,311	1.1%
1992	156,997	169,307	2,155,268	2,481,572	3.7%
1993#	147,971	140,573	1,971,294	2,259,838	-8.9%
1994	174,206	172,048	2,239,190	2,585,444	14.4%
1995	157,502	169,369	2,163,870	2,490,741	-3.7%
1996	156,754	186,899	2,124,892	2,468,545	-0.9%
1997	153,440	175,481	2,123,419	2,452,340	-0.7%
1998	161,313	182,293	2,256,574	2,600,180	6.0%
1999	163,599	188,063	2,397,989	2,749,651	5.7%
2000#	165,256	189,689	2,381,779	2,736,724	-0.5%
2001	169,696	201,823	2,300,564	2,672,083	-2.4%
2002	186,477	220,965	2,375,380	2,782,822	4.1%
2003*	159,510	218,309	2,263,094	2,640,913	-5.1%
2004*	179,574	228,859	2,363,897	2,772,330	5.0%
2005*	189,249	237,384	2,322,680	2,749,313	-0.8%
2006*	193,641	254,251	2,297,600	2,745,492	-0.1%
2007*	186,879	254,344	2,298,831	2,740,054	-0.2%
2008*	203,539	283,329	2,205,837	2,692,705	-1.7%
2009*	235,351	311,889	2,532,419	3,079,659	14.4%
2010*	223,669	283,058	2,415,629	2,922,356	-5.1%
2011*	243,091	319,420	2,331,426	2,893,937	-1.0%
2012*	235,860	312,264	2,319,975	2,868,099	-0.9%
2013*	234,491	319,224	2,152,883	2,706,598	-5.6%
10 Yr/Avg	207,714	274,757	2,318,570	2,801,041	

SOURCE: Alaska Department of Revenue, Report of Alcoholic Beverages Distributed or Sold, 1977-2014.

NOTE: The 4th Judicial District includes Fairbanks, Bethel, Delta Jct., Ft. Yukon, Galena, Healy, Nenana, Rampart, Tanana and Tok.

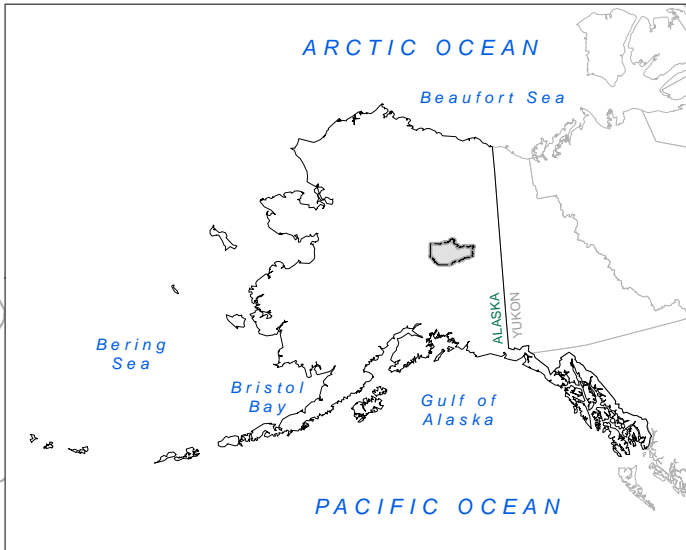
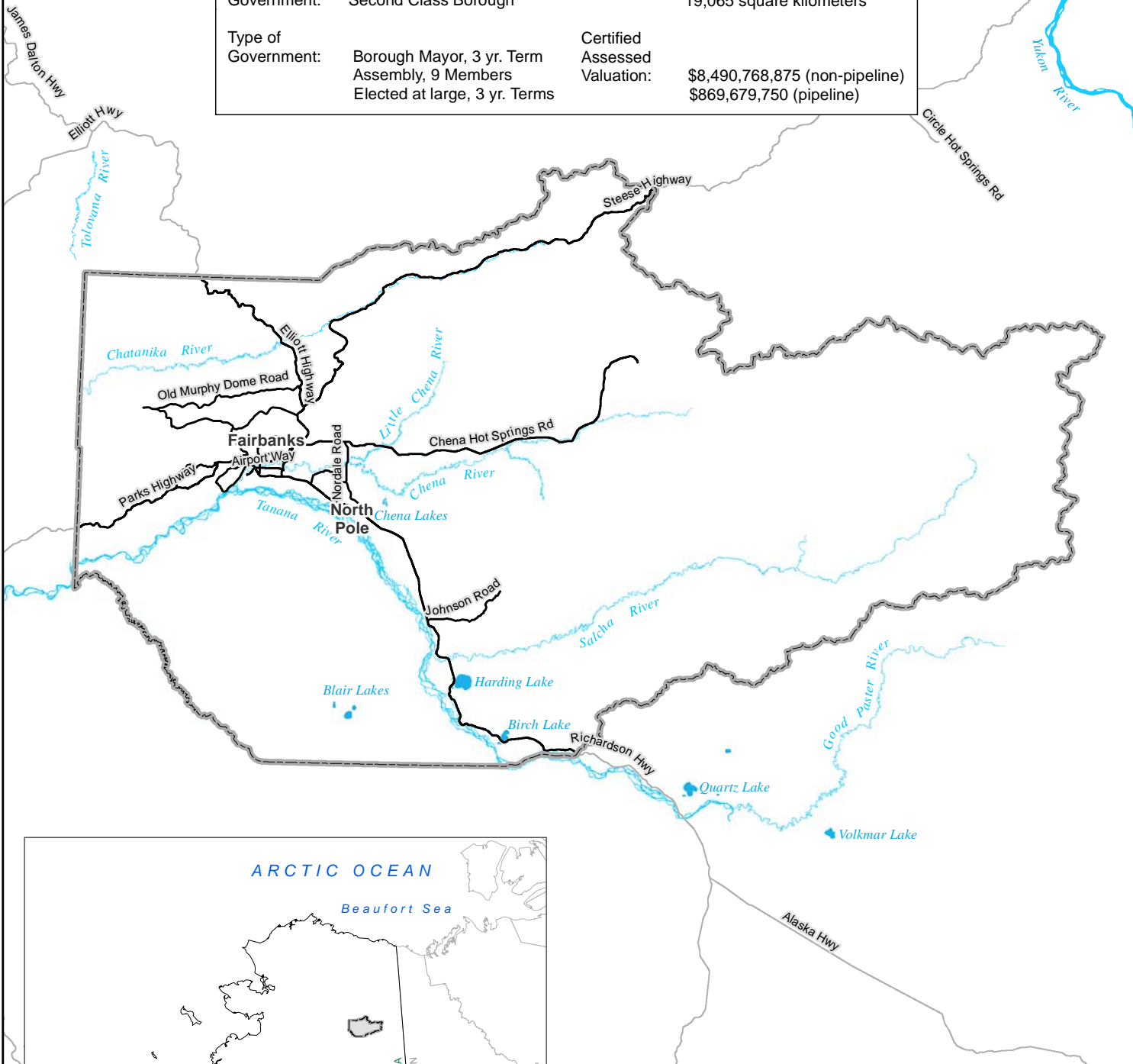
* Information not available.

** Beginning in 2003, qualifying beer includes the category malt beverage in its total.

1993 totals revised January 1998. 2000 totals revised July 2001.

Fairbanks North Star Borough Vicinity

Date of Incorporation:	January 1, 1964	Population US Census:	100,436
Form of Government:	Second Class Borough	Size:	7,361 square miles 19,065 square kilometers
Type of Government:	Borough Mayor, 3 yr. Term Assembly, 9 Members Elected at large, 3 yr. Terms	Certified Assessed Valuation:	\$8,490,768,875 (non-pipeline) \$869,679,750 (pipeline)



Prepared for Community Planning
GIS Division, bmd
March 3rd, 2015

Fairbanks North Star Borough
Community Research Center
PO Box 71267
Fairbanks, AK 99707-1267

TO: